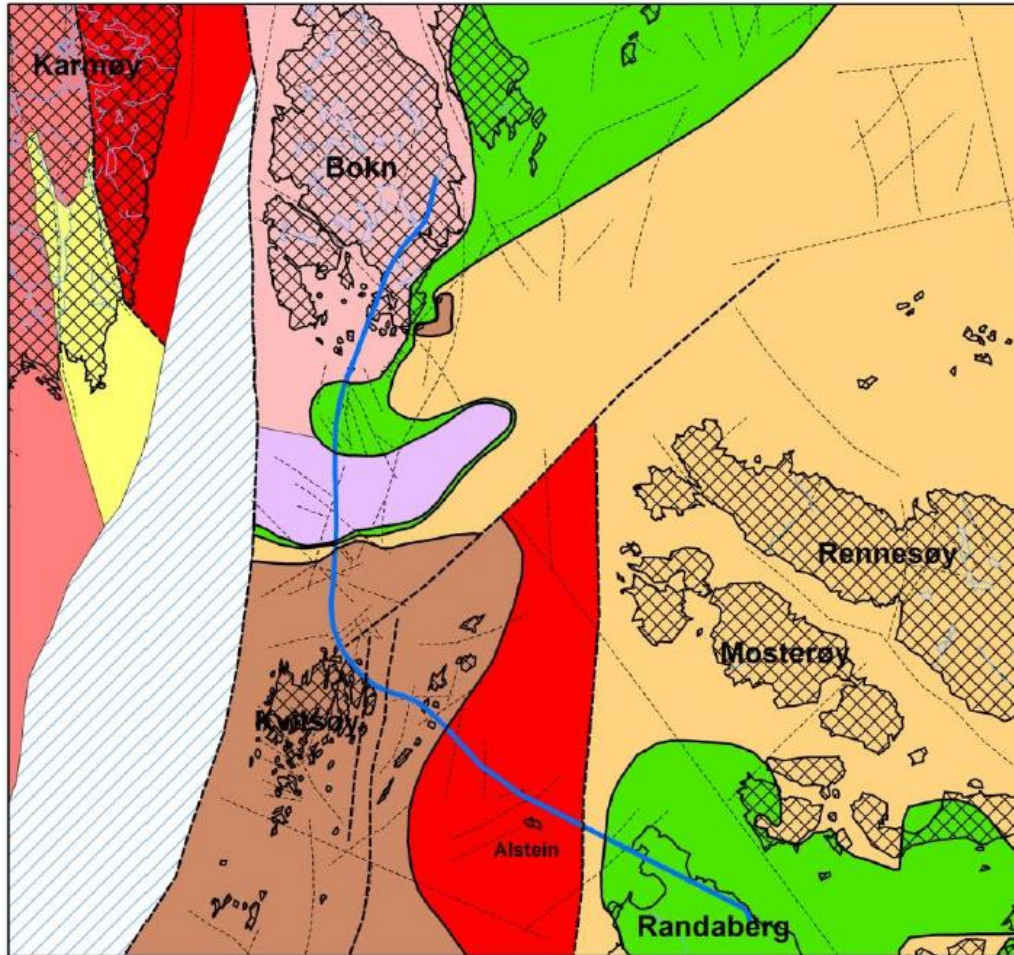


E39 ROGFAST

Geologi



- Karmsundet basin sedimentary rocks. Jurassic?
- Skudesnes Group, sandstone and conglomerate
- Vistnes ad Torvastad Group, greenstone and volcanic derived sediments
- Vest-Karmøy Suite, granite to tonalite
- Karmøy Ophiolite, gabbro, ultramafics, trondhjemite
- Storheia and Boknafjorden Nappes, Precambrian crystalline gneisses
- Ryfylke schist, mica schist, phyllite
- Precambrian basement, porphyritic granite
- Precambrian basement, granitic to granodioritic gneisses
- Thrust
- Fault
- Lineament
- Tunnel trace