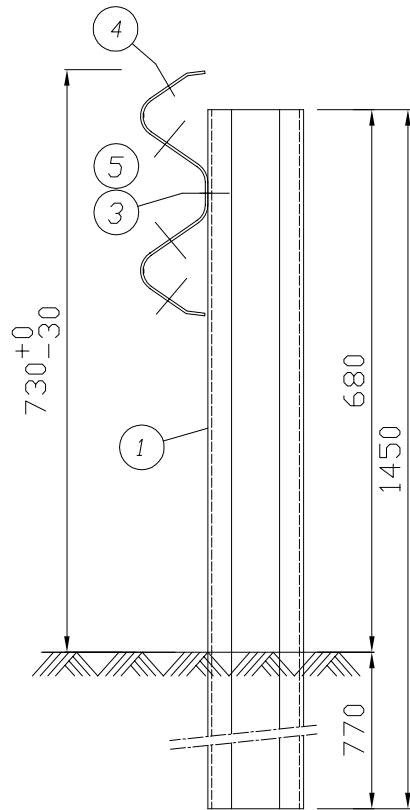
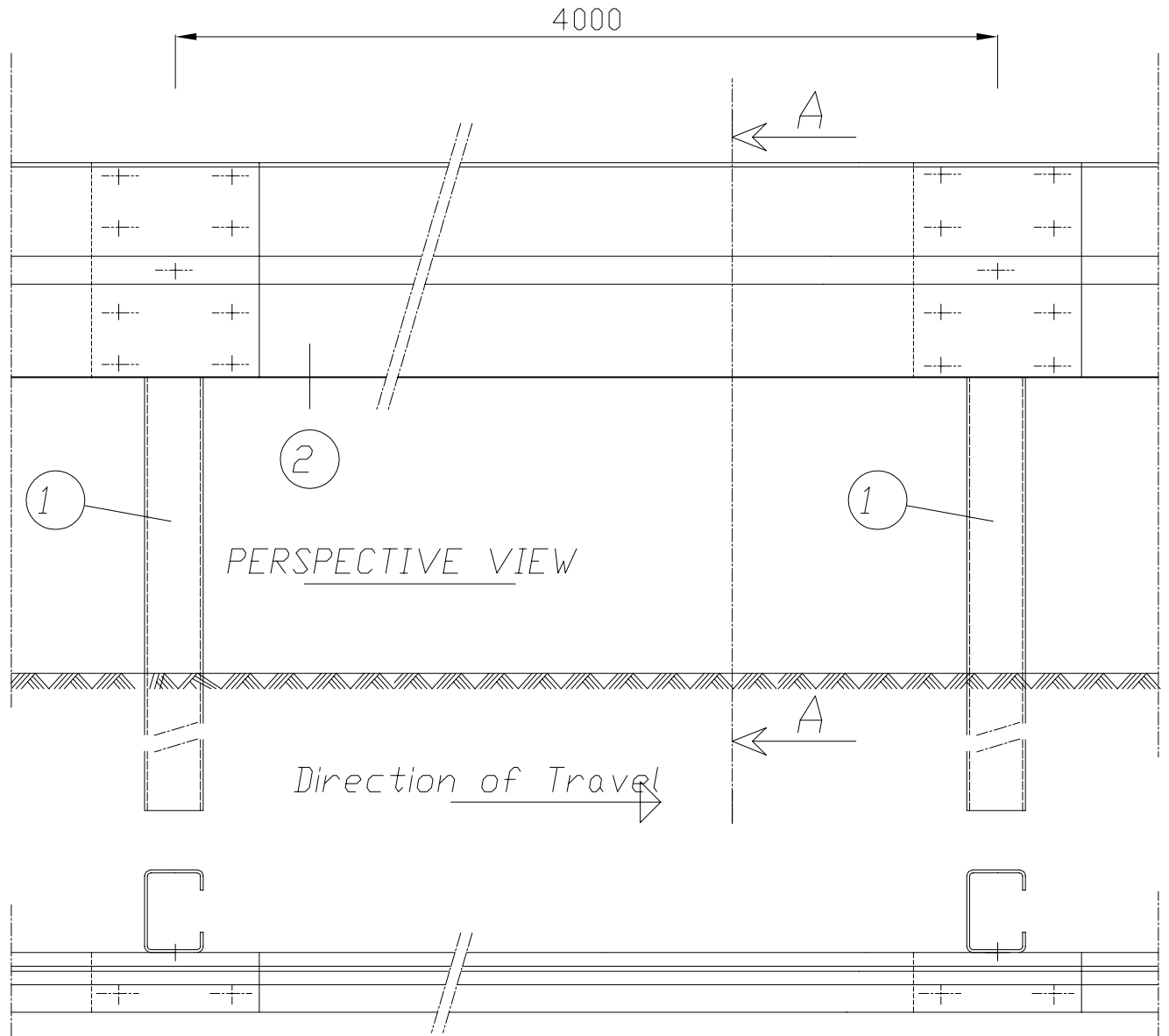


SEZIONE A-A




PLANT VIEW



PDS.	DESCRIPTION	DRAW	MAT.
1	*C* SHAPED POST	DIM. 120x80x25x4 mm H=1450 mm	SR235JR
2	DOUBLE WAVE BEAM	Beam L=4000mm Thk.3,00 mm	SR235JR
3	BOLT M12X50	M12 Hexagon Head - 20Nm	cl. 8.8
4	BOLT M16X30	M16 Round Head - 90Nm	cl. 8.8
5	*HOLE COVER* PLATE	Plate 100x40 thk. 4 mm	SR235JR

REV.	INDICATION OF REVISION	MARK	DATE	ISSUE	MARK	DATE	STEEEL QUALITY SR 235 JR UNI EN 10027-1 and UNI EN 10025
2				DRAWN	TEC	13/11/18	Tolerances: UNI EN 10029 - UNI EN 10051 - UNI EN 10162 - UNI EN 10143 - UNI EN 3740
1				APPROVED	DG		Galvanization UNI EN ISO 1461



PONTE - ITALY

DOUBLE WAVE BEAM BARRIER CLASS N2 W3 FOR EMBANKMENTS

SCALE 1:10
DRAW:

CAR Segnaletica Stradale s.r.l. - HQ: Zona industriale -C.da Piana -82030 Ponte (BN) -Italy tel. +39/0824 875189/875215/875174 - Fax +39/0824 875174 http://www.carsrl.com- E-mail: info@carsrl.com

The following drawing, reserved property of CAR can be produced and supplied to third parties with prior written authorization. In the event of a breach the CAR reserves the right to proceed according to the law.