

1

2

3

4

5

6

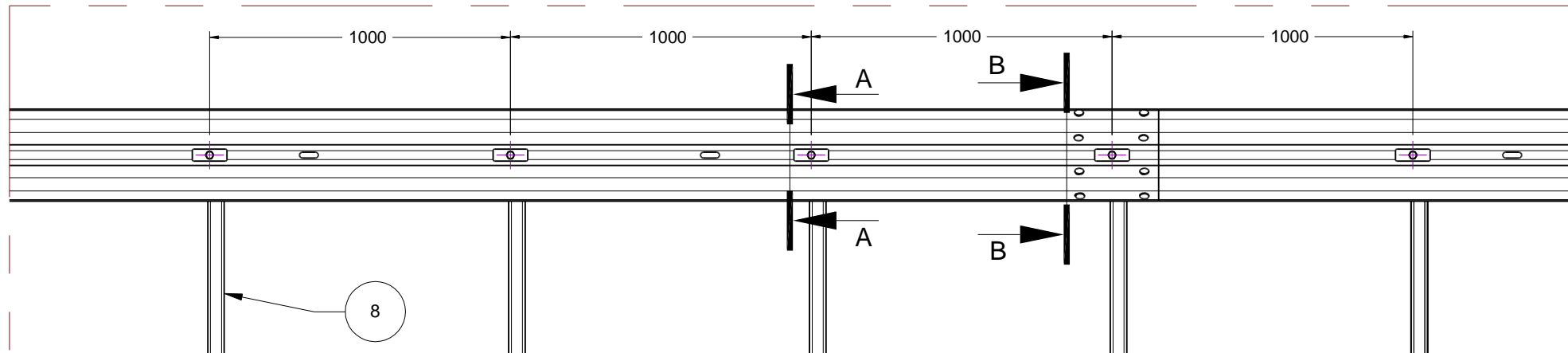
7

8

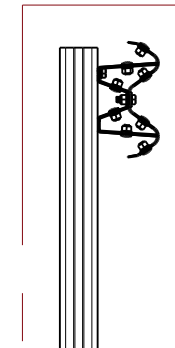
RevNo	Revision note	Date	Signature	Checked
-------	---------------	------	-----------	---------

A

A



SCALE 1:20

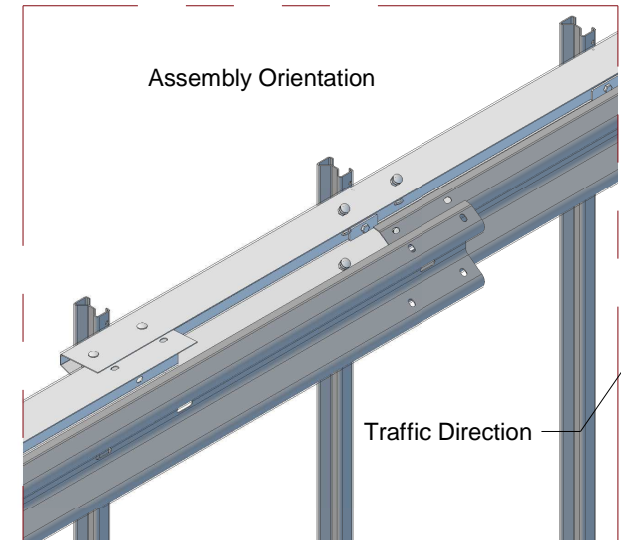


B

B

C

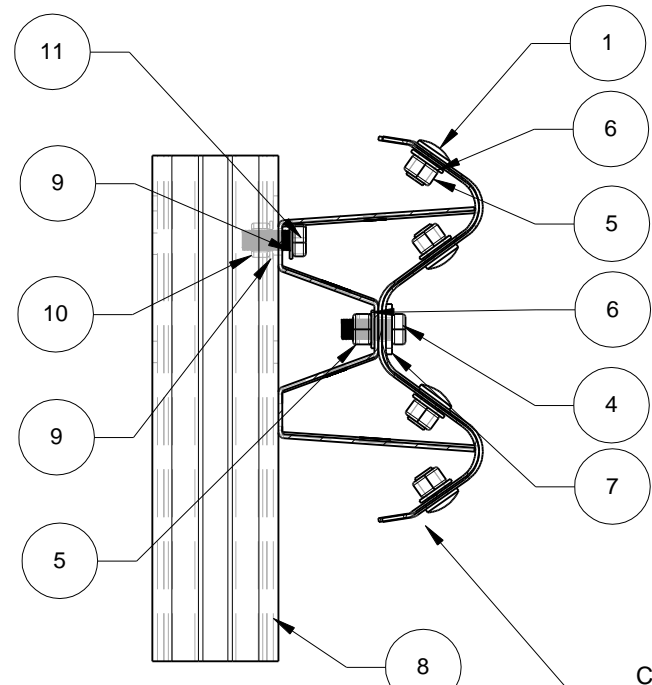
C



D

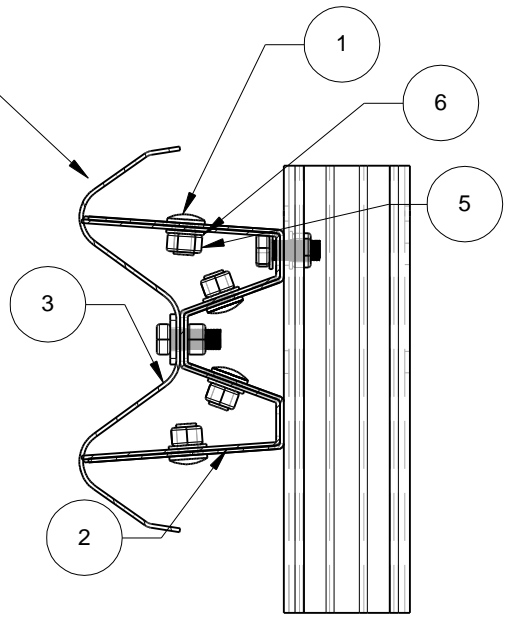
D

Connections:
M Profile 3mm / M Profile 3mm--> 8 x M16x25 w/ rotation stop



Section B-B

SCALE 1:6



Section A-A

SCALE 1:6

Connections:
Sigma Post / M Profile 3mm --> 1 x M10X45 bolt set
M Profile 3mm / W profile --> 1 x M16x40 bolt w/ Plate 115x40x5 (every 1000mm)
W profile / W profile --> 8 x M16x25 w/ rotation stop

Note:
To be hot dip galvanized after welding according to ISO 1461

Item Number	Part Name	Material	Weight [Kg]	Comment	Art. no.:
1	Bolt M16 x 25mm with rotation stop	4.6	0.068	60641	650
2	M Profile 3mm 4316mm	S235	58.629	40083-3	535
3	W Profile	S235	47.070	GS101013-1	100
4	M16X40 Hex head bolt	8.8 SB - ISO 4017	0.091	GS130124	685
5	M16 Hex Nut	ISO 4032	0.033	GS130124	675
6	IØ17 washer	ISO 125A	0.009	GS130124	670
7	Plate 115x40x5 - Ø18	S235	0.169	40083-7	640
8	4mm Sigma Profile	S235	14.19	GS100901-1	200
9	Washer 30x30x3	S235	0.0189	60615	610
10	Nut M10 DIN 934 - Cl.8		0.0116	60615	605
11	Bolt M10x45 DIN 601	4.6	0.0411	60615	620

Itemref	Quantity	Title/Name, designation, material, dimension etc	Article No./Reference
Drawn by	Checked by	Approved by - date	File name
			Date March 19, 2015
			Scale



RH2-1 - Sigma post / M profile / W profile
Assembly

Drw. no.: GS1503202	Edition A	Sheet 1/1
Manufacturer/Producer: CC4-JSGQ-LS-CZ		

1

2

3

6

7

8

F

F