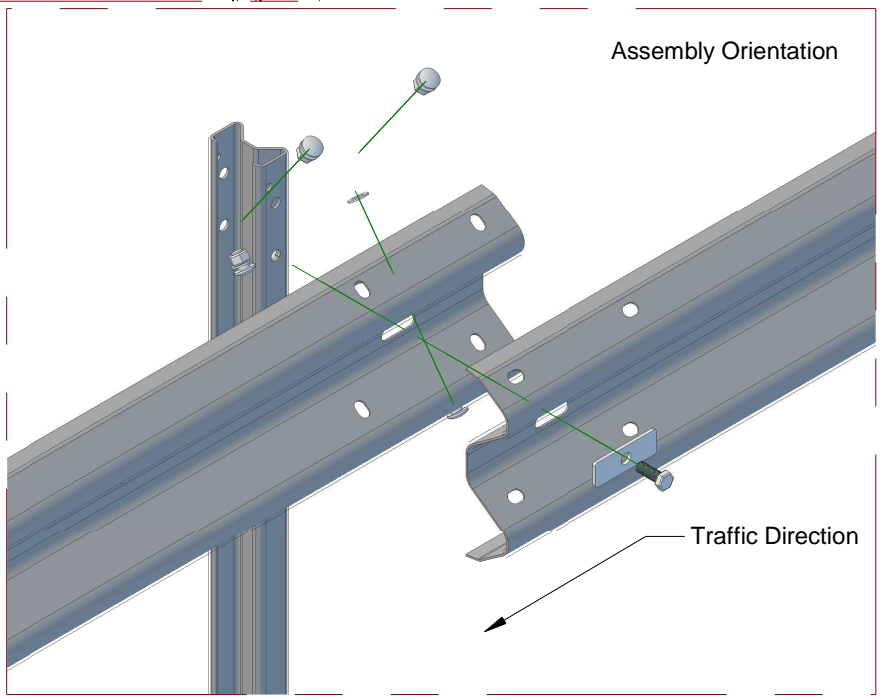
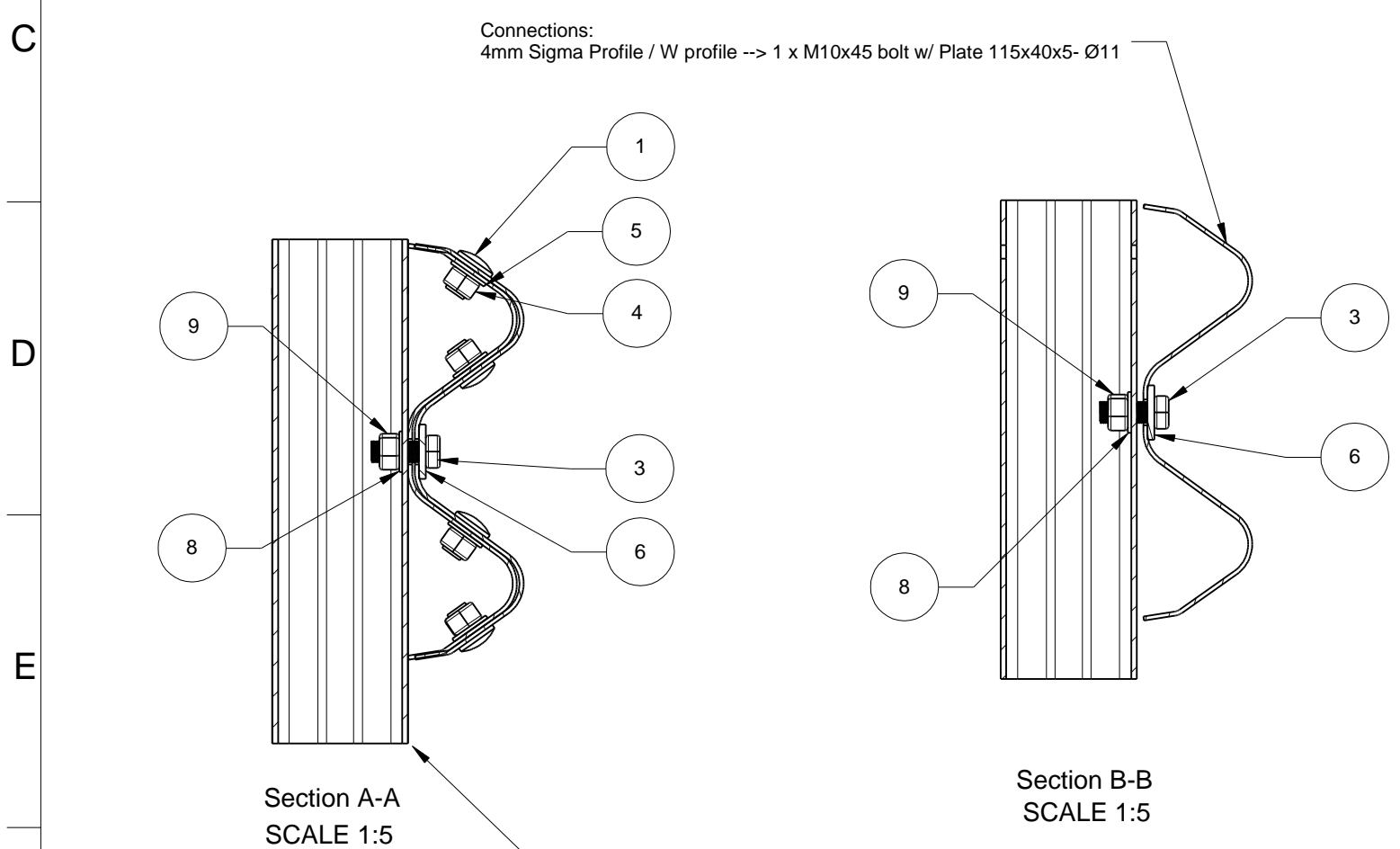
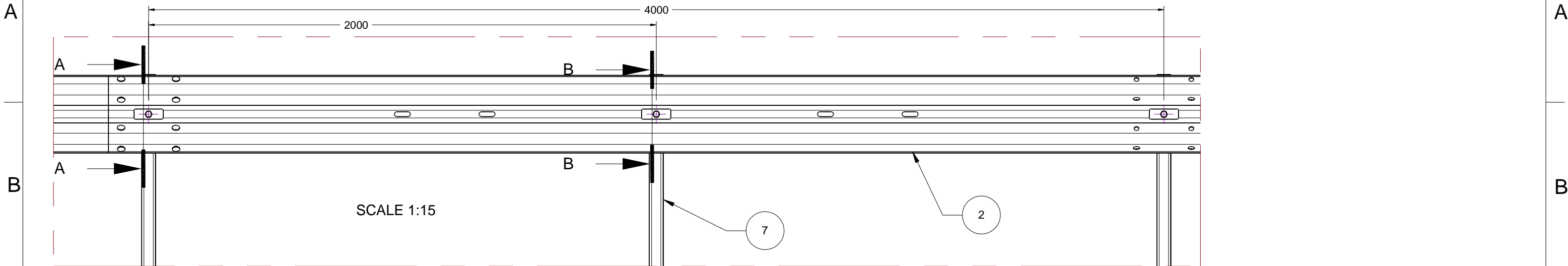


1 2 3 4 5 6 7 8

RevNo	Revision note	Date	Signature	Checked
B	Exploded view added/ Info Header added/ Article no.: added	19-03-2015	MM	



Item Number	Part Name	Material	Weight [Kg]	Drawing	Art. No.:
1	Bolt M16 x 25mm with rotation stop	4.6	0.068	60641	650
2	W Profile	S235	47.070	GS101013-1	100
3	Bolt M10x45 DIN 601	4.6	0.0411	60606	620
4	M16 Hex Nut	ISO 4032	0.033	GS130124	675
5	Ø17 washer	ISO 125A	0.009	GS130124	670
6	Plate 115x40x5 - Ø11 Hole	S235	0.169	60606	615
7	4mm Sigma Profile	S235	14.19	GS100901-1	200
8	Washer 30x30x3	S235	0.0189	60606	610
9	Nut M10 DIN 934 - Cl.8		0.0116	60606	605

Itemref	Quantity	Title/Name, designation, material, dimension etc	Article No./Reference
Drawn by	Checked by	Approved by - date	File name
			Date March 19, 2015
			Scale

Note:
To be hot dip galvanized after welding according to ISO 1461



RS-2 Sigma / W profile
Assembly
Drw. no.: GS140823
Manufacturer/Producer: CC4-JSQ-L-S-CZ
Edition B
Sheet 1/1

1 2 3 4 5 6 7 8

F

F