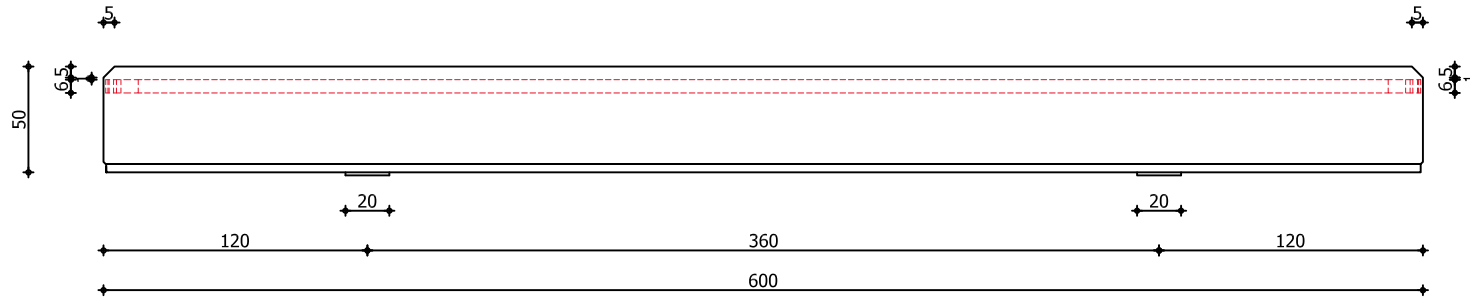
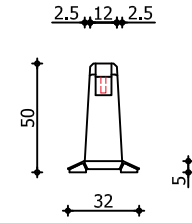


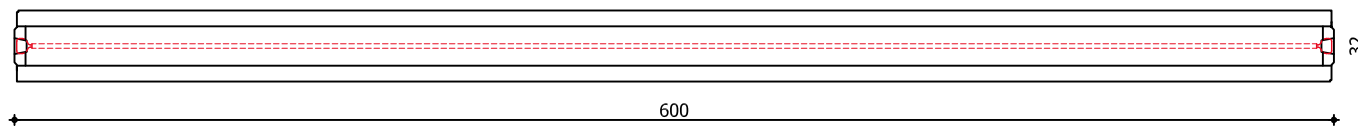
front view



side view



top view



DELTABLOC®

Standard DB 50SL / 6m K60S

tensionbar:	K60S
dimensions (l/w/h):	600/32/50cm
weight:	1090kg
containment level : nach EN 1317:	T1/W1/ASI A T3/W2/ASI A
drawing number:	M683013T.-
date:	23.11.2015