

TEKNISK BESKRIVNING, VÄGRÄCKE

ARMERING BALK

LÅNGSGÄNDE $\phi 16$ mm - 6St.
 PROFILERADE FÖRDELINGSBYGLAR $\phi 8$ mm - 6St.
 ARMERINGSKVALITET I $\phi 16$: K500 C-T.
 ARMERINGSKVALITET I $\phi 8$: K500 C-T.

ARMERING FOT

SPRICKARMERING 4st $\phi 12$ B-Byglar 600×200 mm
 ARMERINGSKVALITET K500 C-T.

DISTANSKLOTS

TÄCKSKIKT 35 mm.
 HJULDISTANS I PLAST.

BETONG

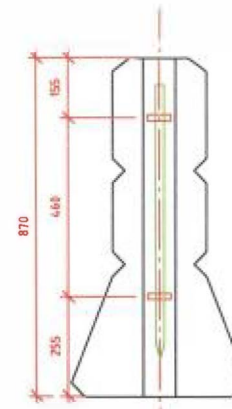
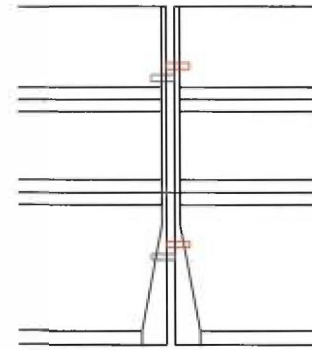
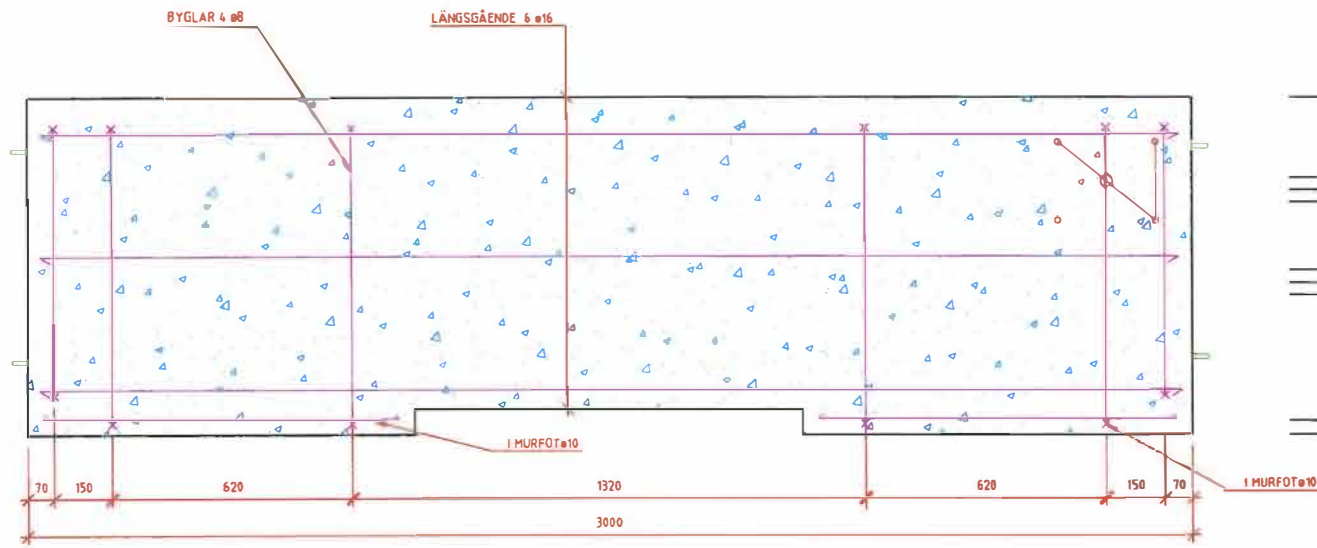
FROSTRESISTENT BETONGKVALITET BTG C35/45.
 SKB S2 BASCEMENT
 LIVSLÅNGD L20 ÅR
 EXPONERINGSKCLASS XD3 + XF4.

VIKT

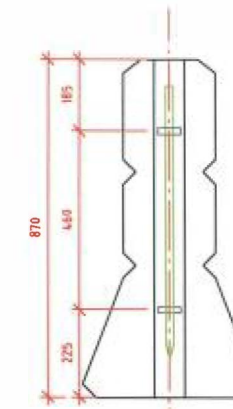
1500 Kg

GÄLLANDE NORMER

SSEN 1317-5:2007+A2:2012/AC:2013

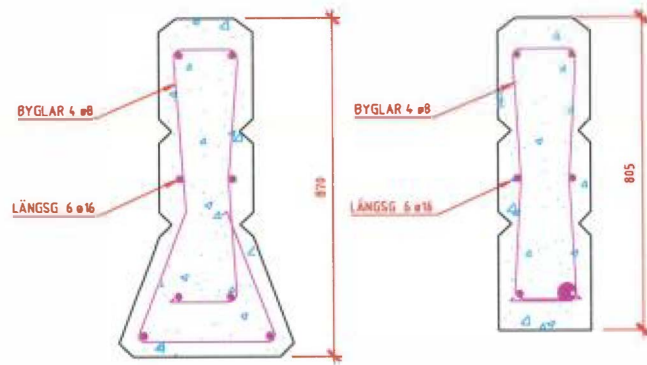


RÖD HÖG

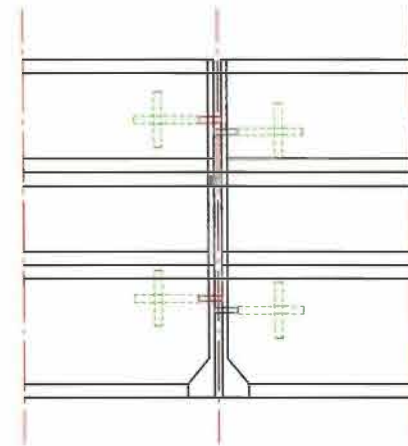


GRÅ LÅG

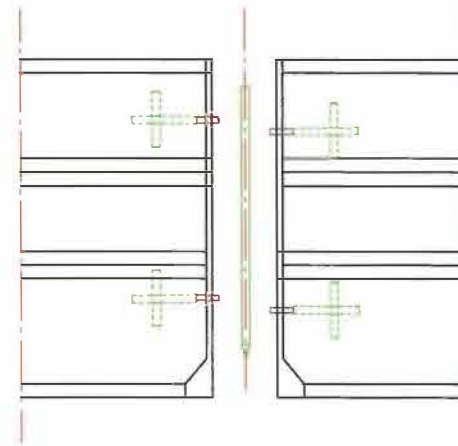
FIGUR 9



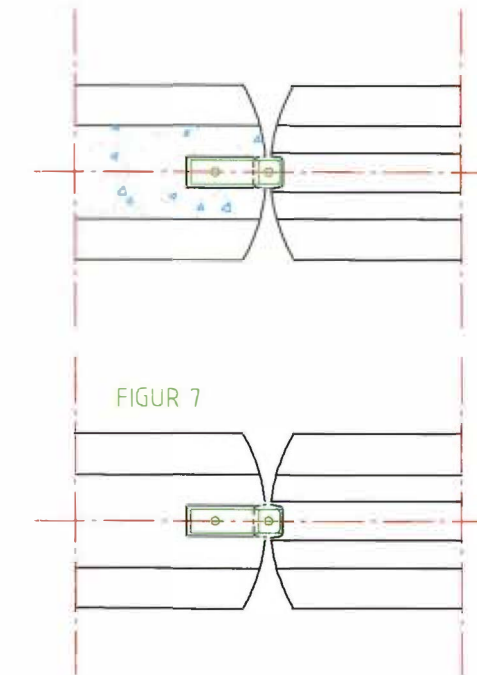
FIGUR 3



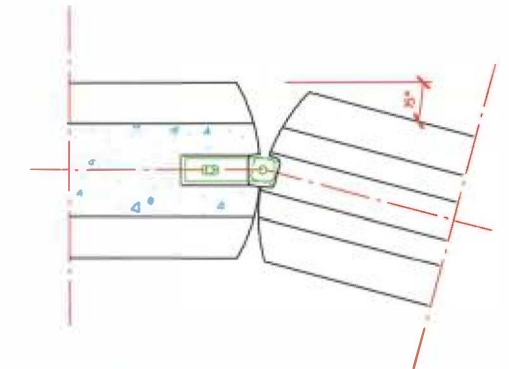
FIGUR 5



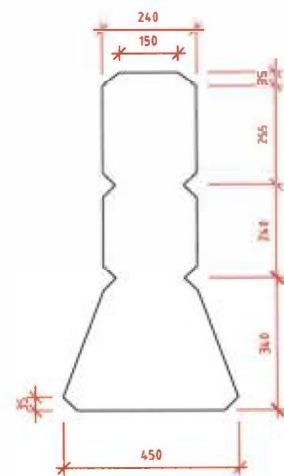
FIGUR 6



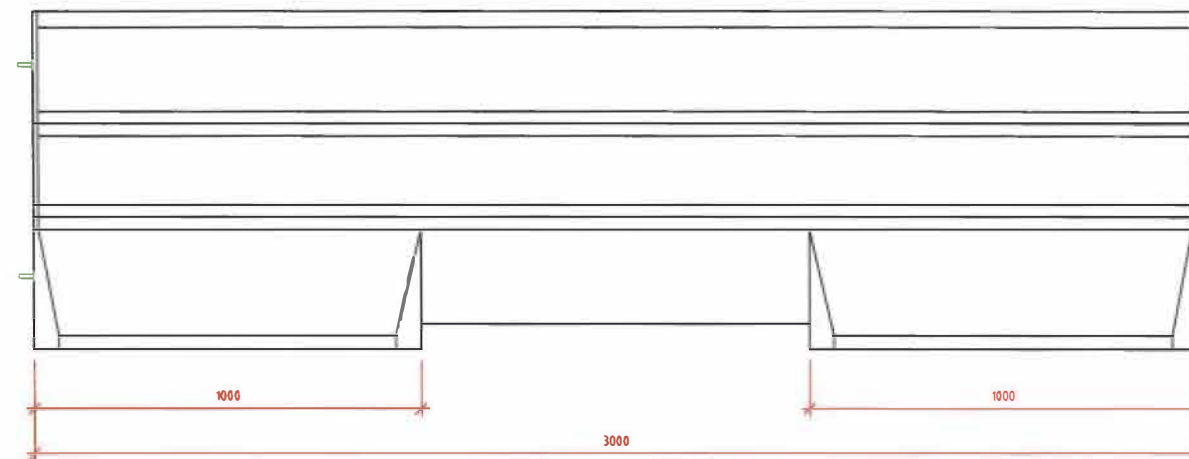
FIGUR 7



FIGUR 8



FIGUR 1



FIGUR 2

ARBETSRITNING

GunnarPrestab AB Berg Öres väg 12, 795 21 RÄTTVIK
 Tel. 0248-131 30, Fax 0248-133 22
 E-post: gunnarprestab@rv3.se
 BYGG OCH VÄRDESKAPAN AV
 Mjn
 ORT, DATUM
 RÄTTVIK 2016-08-29

B	ÄNDRAD TEXT I TB	EF	2022-02-04
A	ÄNDRING AV TEXT I TB	EF	2017-11-29
BET	ANT	ÄNDRING AVSEER	DOM
GP-LINK		TYP: 1.5 3M	
SKALA 1:10		A 02	