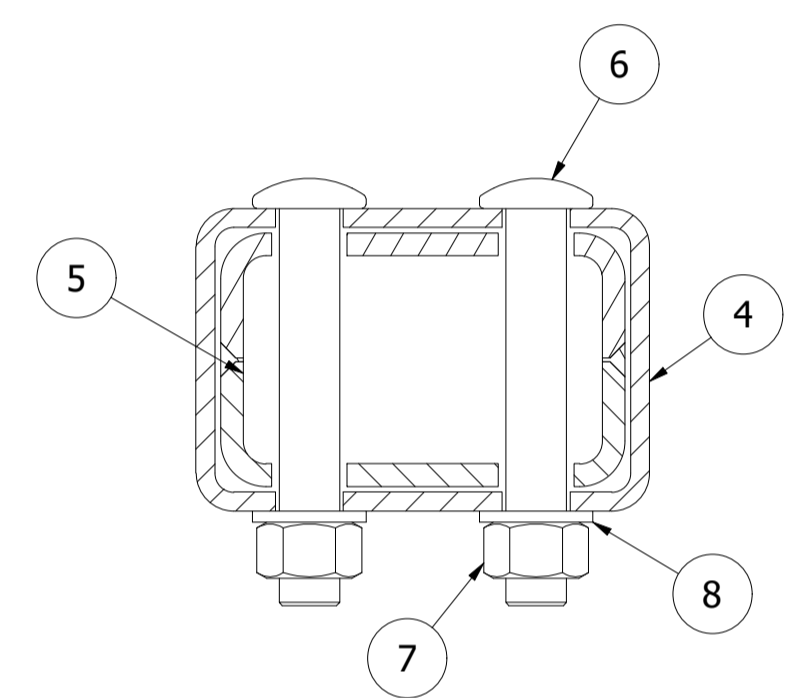
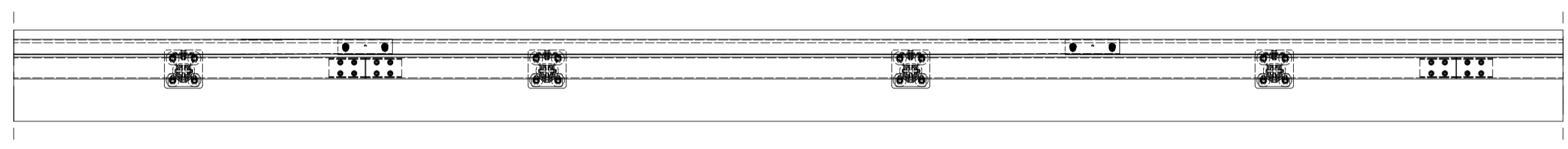
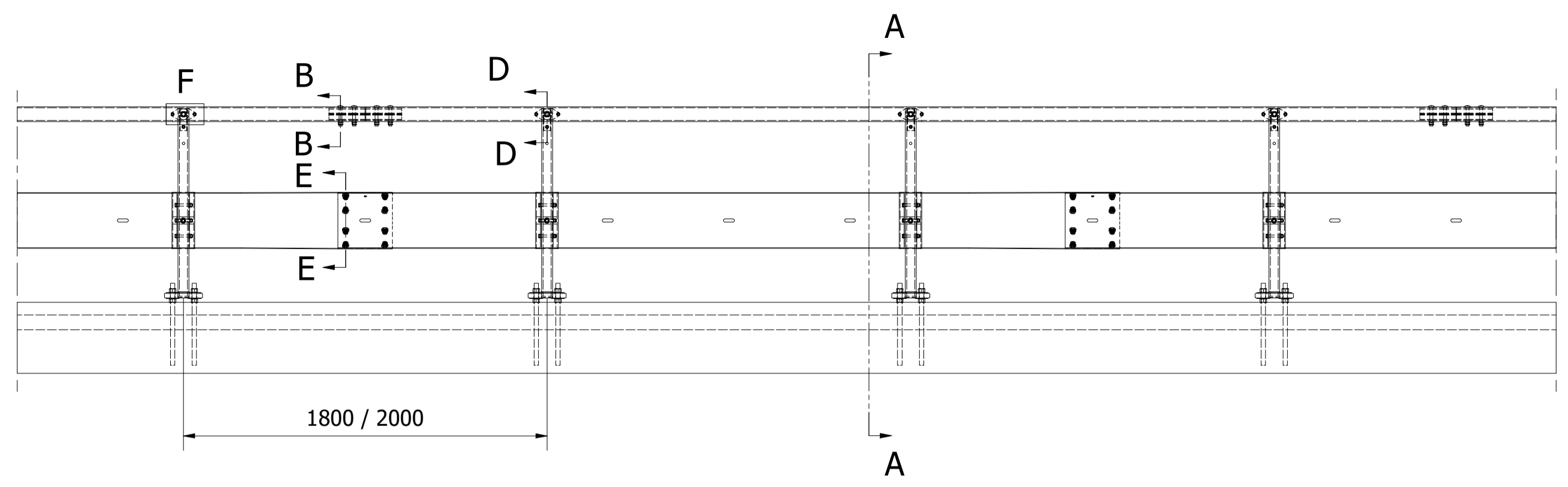
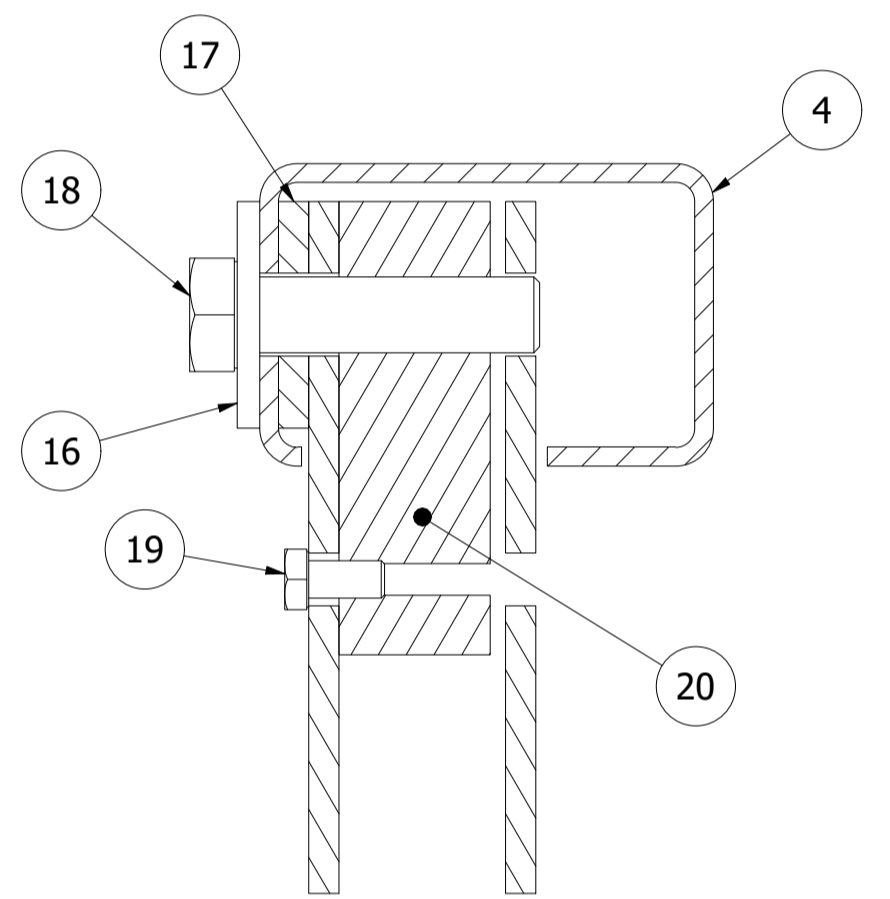


**REGULATION**

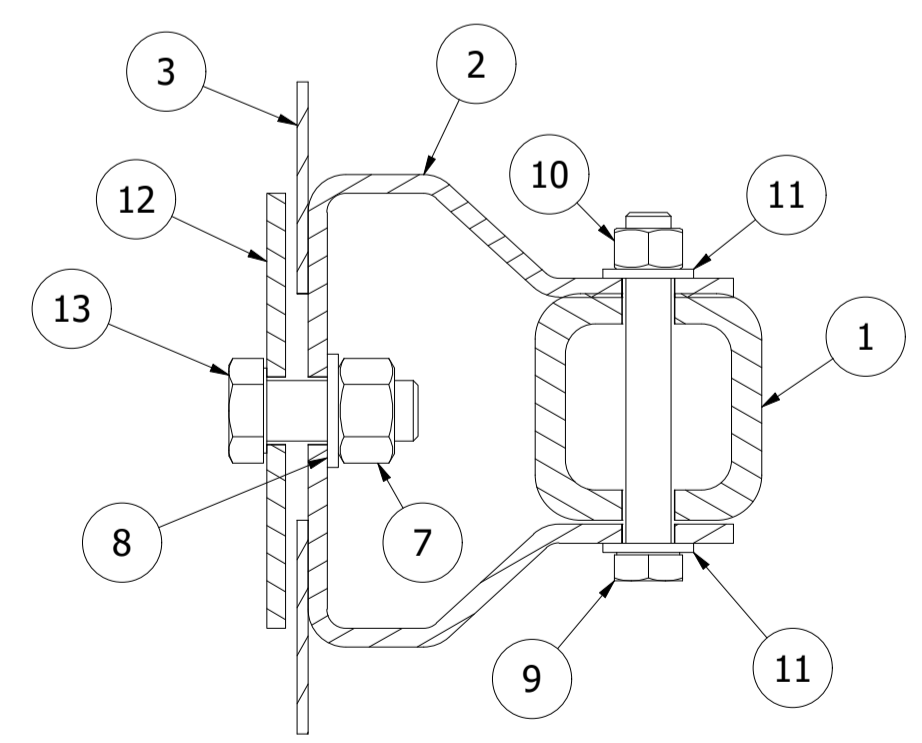
TESTED ACC. TO SS-EN 1317-2 (CONTAINMENT LEVEL H2)  
 FACTORY PRODUCTION CONTROL ACC. SS-EN 1317-5  
 HDG ACC. TO SS-EN ISO 1461:2009



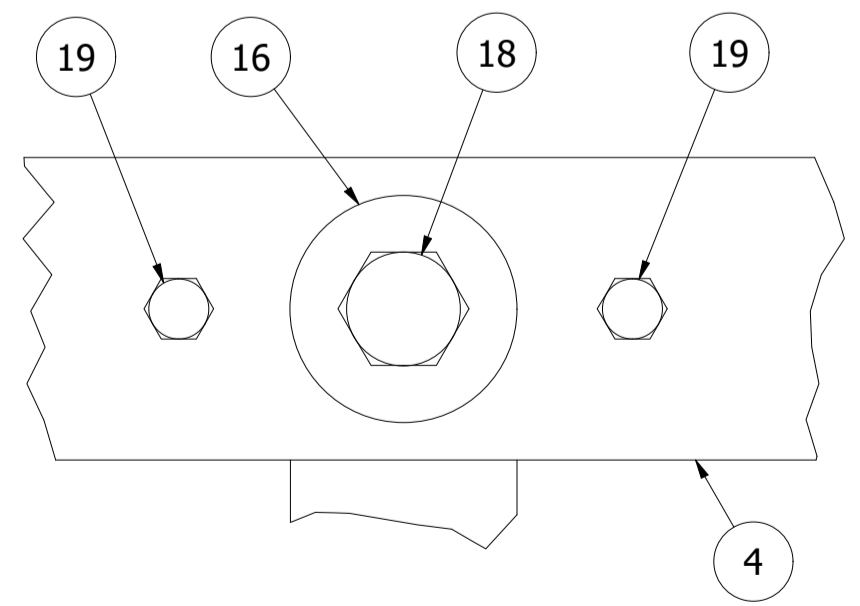
B-B ( 1 : 2 )



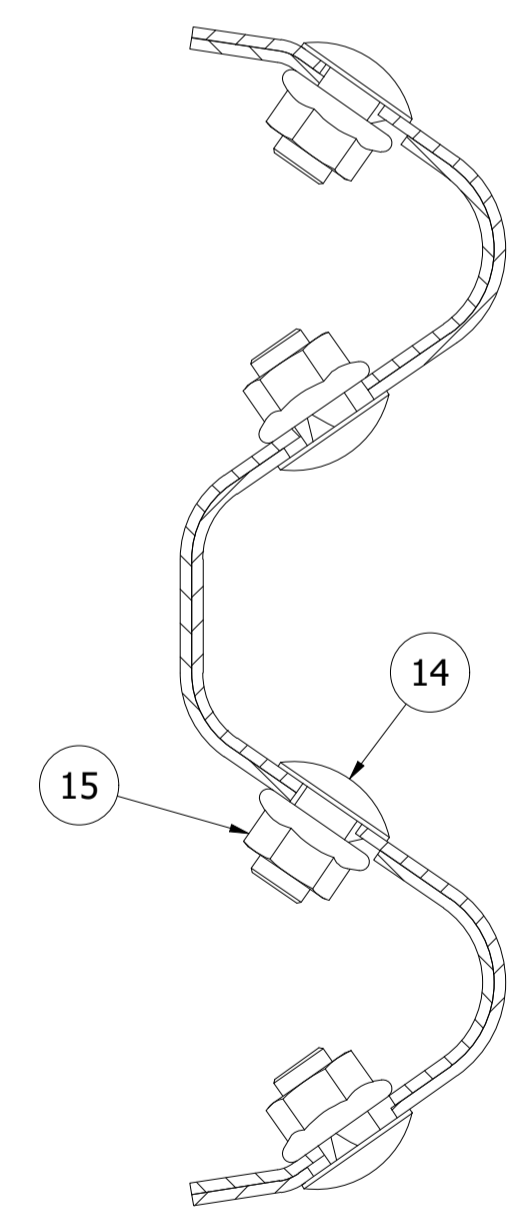
D-D ( 1 : 2 )



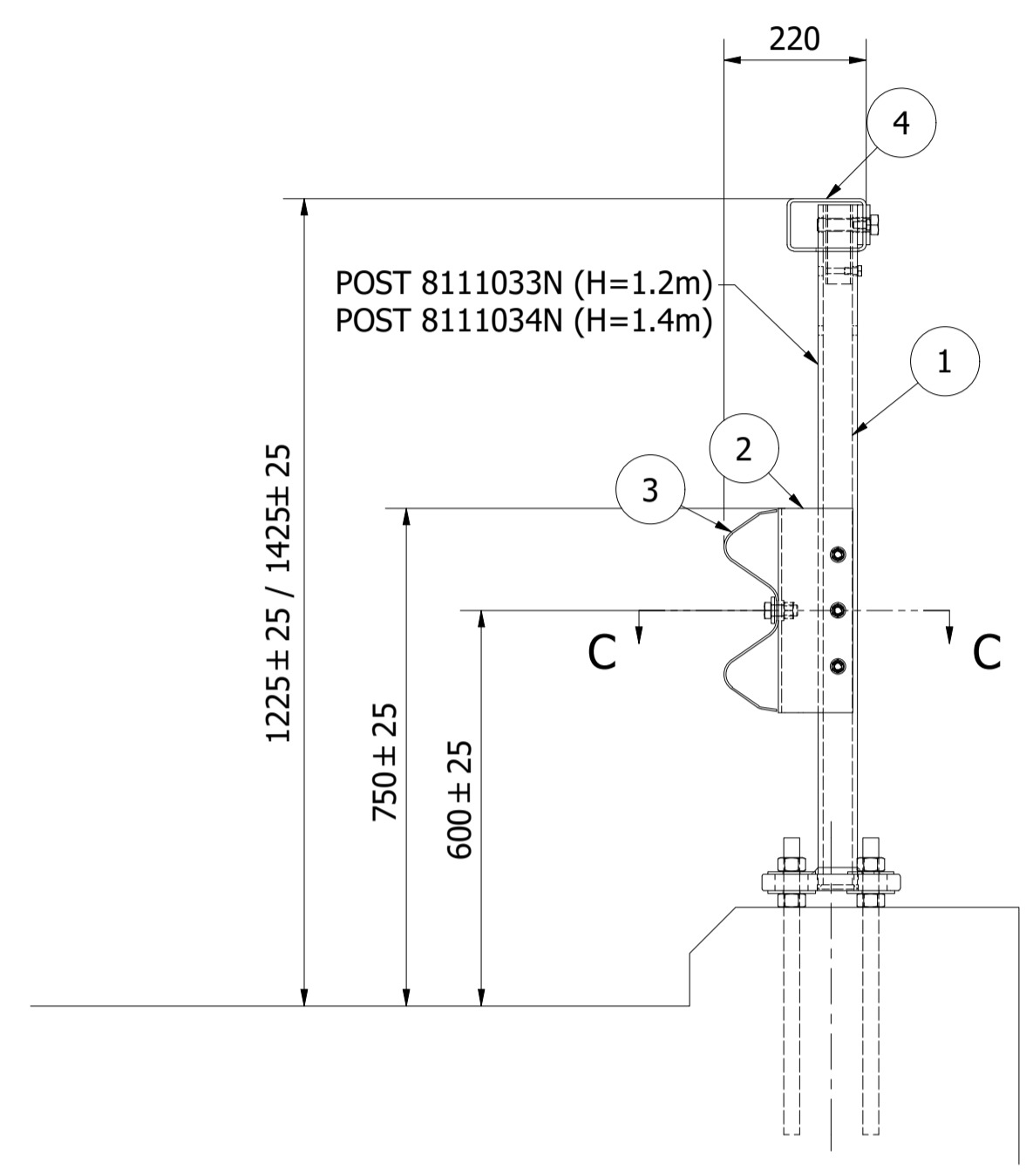
C-C ( 1 : 2 )



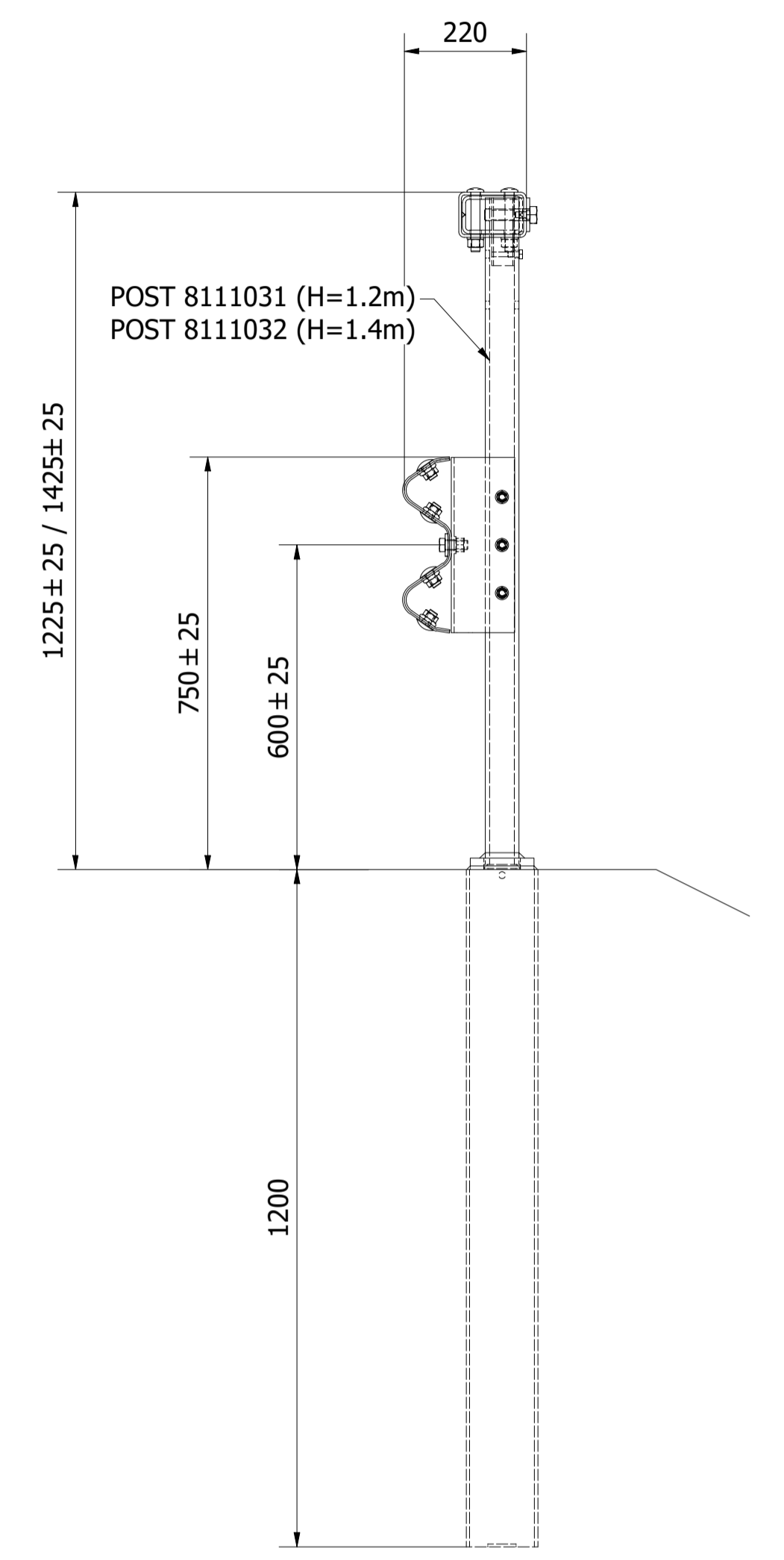
F ( 1 : 2 )



E-E ( 1 : 2 )



A-A ( 1 : 10 )



Ver. 33107000 / 33207000 ( 1 : 10 )

1	12	H2 HIGH POST	L=1040	8111033
2	12	DISTANCE ELEMENT	T=5	8113031
3	6	W PROFILE	L=4300	8012443
4	4	Nordic TOP RAIL	L=5996	8112055
5	4	JOINT TOP RAIL	L=400	8113013
6	32	BOLT	M16x105	122161050
7	44	NUT	M16	120160000
8	44	WASHER	17x30	126170300
9	36	BOLT	M12x90	121120900
10	36	NUT	M12	120120000
11	72	WASHER	13x24	126130240
12	12	WASHER 115x40	T=5	127181150
13	12	BOLT	M16x40	121160400
14	48	ROUND HEAD BOLT	M16x27	122160270
15	48	FLANGE NUT	M16	120160003
16	12	WASHER	22x60x6	126220600
17	12	INSTALLATION WASHER	140x60x8	8113014
18	12	BOLT	M20x80	121200801
19	36	BOLT	M10x20	121100200
20	12	INSTALLATIONSMUTTER	40x40x120	8113042
40	96	SEKKANTMUTTER	M24	140240000
41	72	BRICKA	25x72	146250720
42	12	Nordic H2 High FOTPLATTA BRICKA	T=4	8114019

REVISION HISTORY			
REV	DESCRIPTION	DATE	APPR.
1	NEW VERSIONS ADDED	2023-07-09	FS

Designed by	Checked by	Approved by	Date	Scale	Size
		FS	2018-09-19	1 : 25	A1
<b>NRS</b> Nordic Road Safety AB					
<b>Nordic W H2 High - NO</b>					
30000007NO				Edition	Sheet
				1	1 / 1