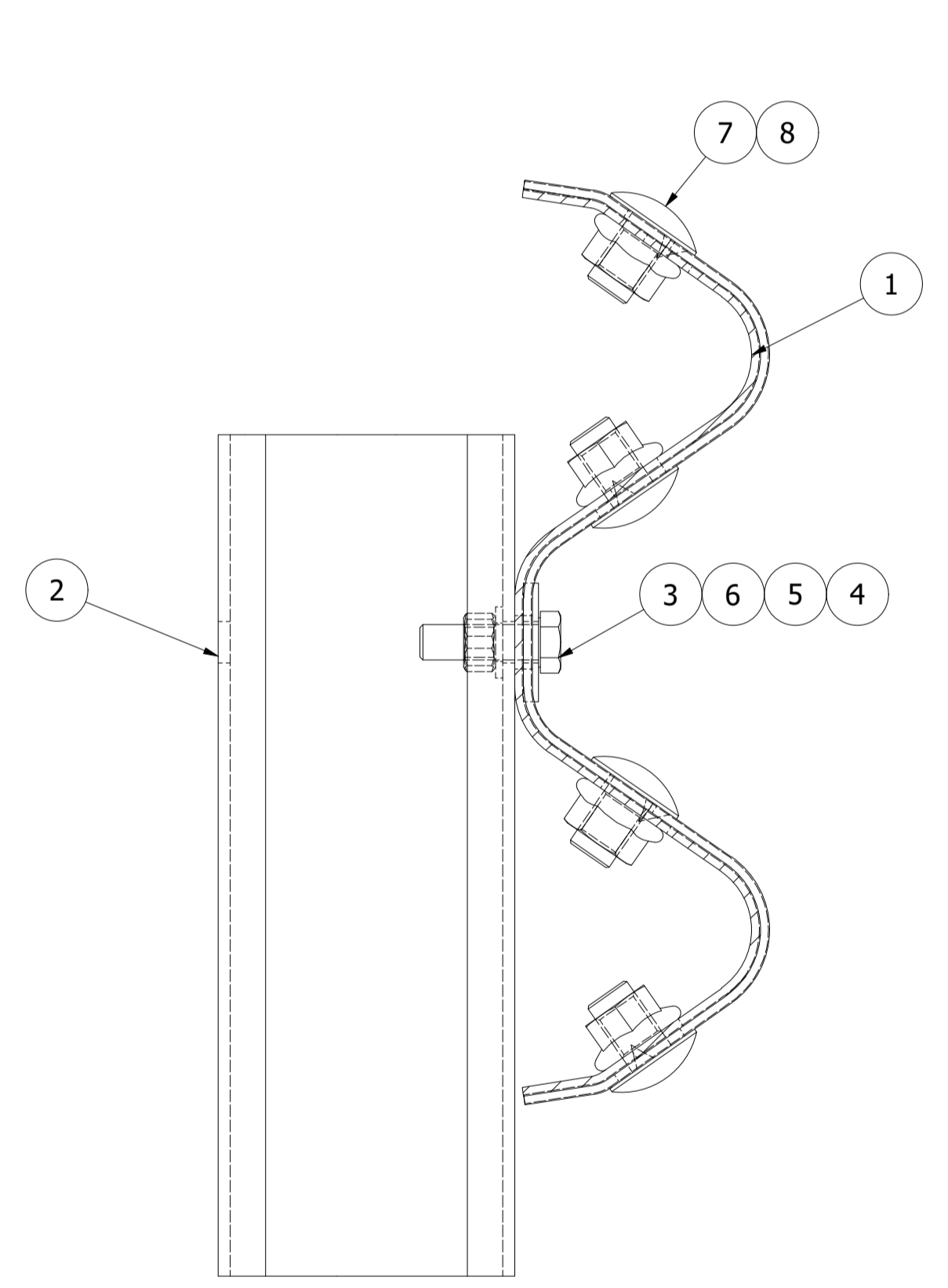
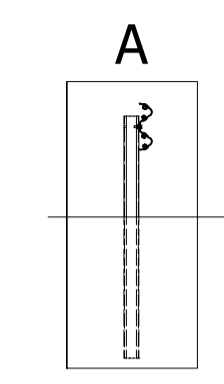
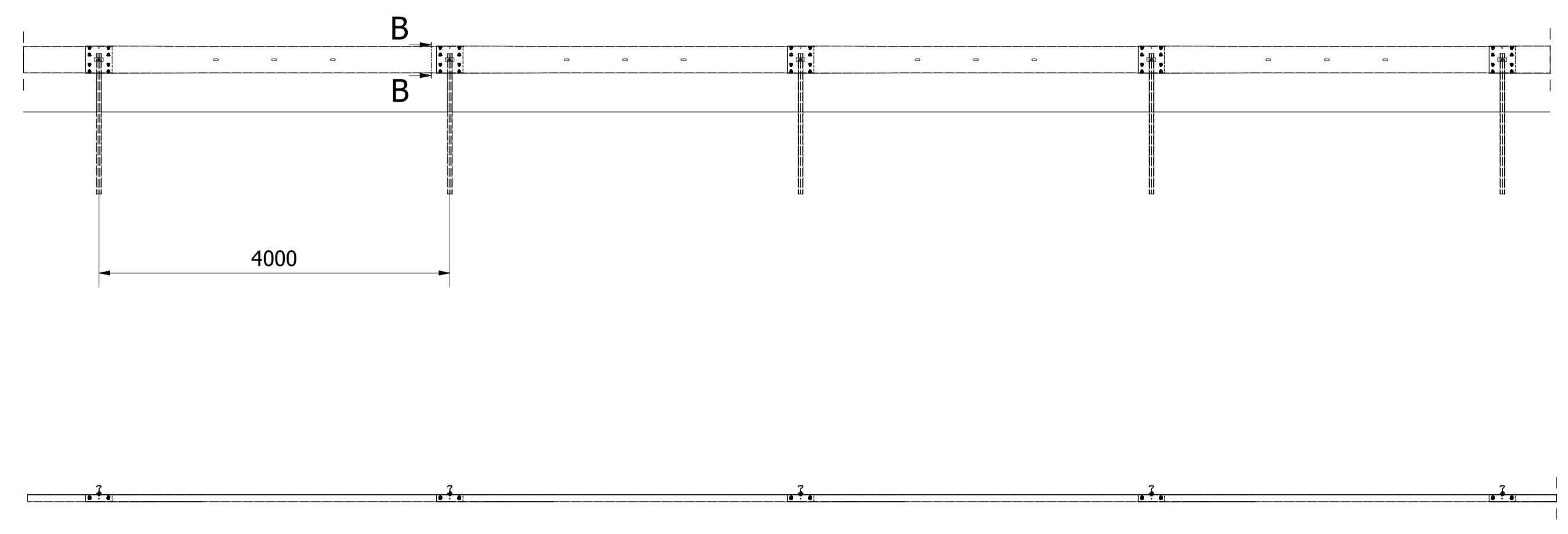


12 11 10 9 8 7 6 5 4 3 2 1

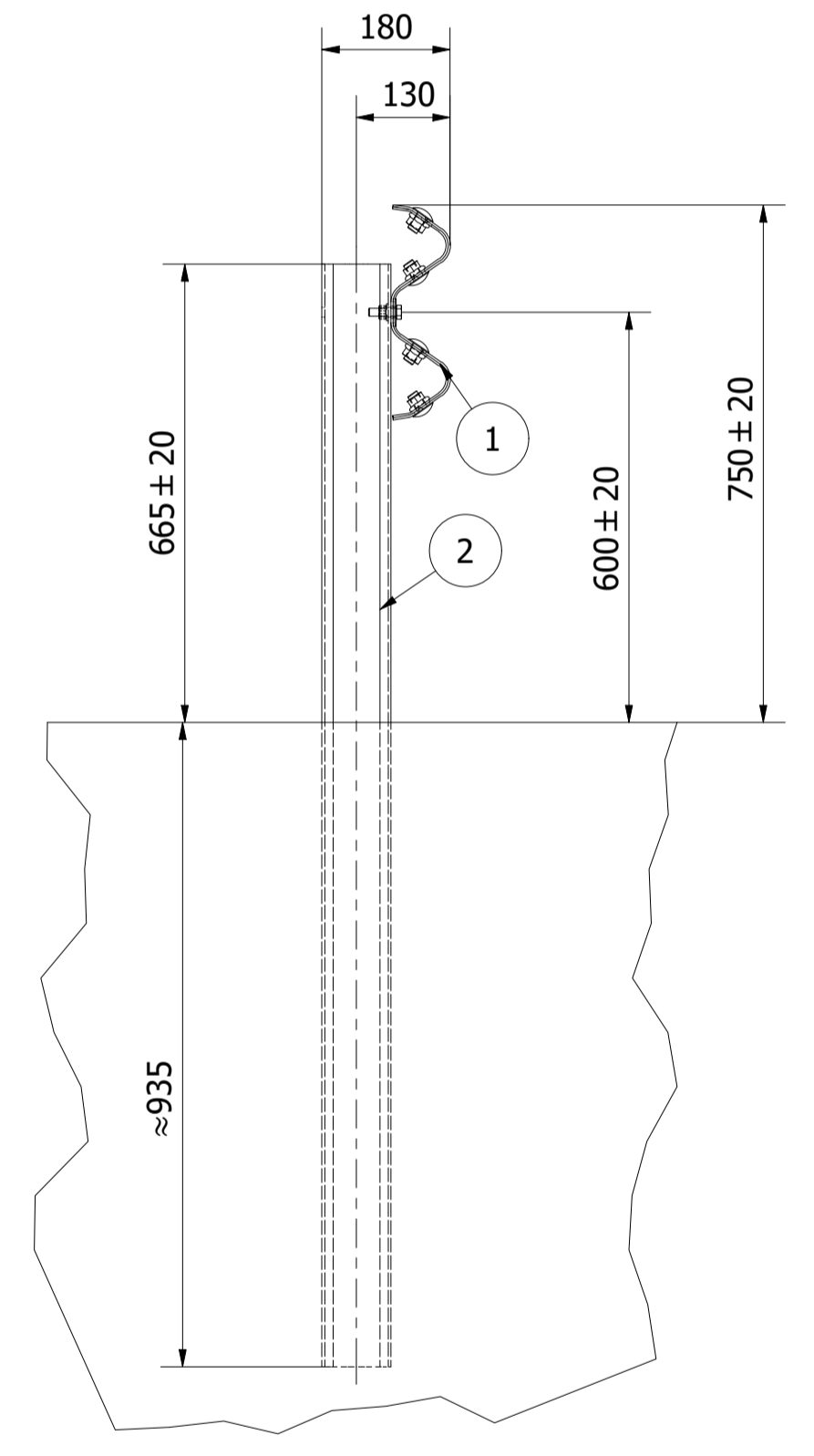
H G F E D C B A

**REGULATION**

TESTED ACC. TO SS-EN 1317-2 (CONTAINMENT LEVEL N2)  
 FACTORY PRODUCTION CONTROL ACC. SS-EN 1317-5  
 HOT DIP GALVANIZING ACC. TO EN ISO 1461.  
 ITEM 8 (FLANGE NUT) CAN BE REPLACED WITH WASHER AND NUT  
 ITEM 4 & 5 (WASHER AND NUT) CAN BE REPLACED WITH FLANGE NUT



B-B ( 1 : 2 )



A ( 1 : 10 )

ITEM	DESCRIPTION	MAT.	DIM.	NOTE
1	W PROFILE	S235	L=4300	8012317N
2	SIGMA POST	S235	T=4	8012478
3	BOLT	4.6	M12x40	122120400
4	NUT	8	M12	120120000
5	WASHER	-	13x24	126130240
6	WASHER 100X40	S235	T=5	127141000
7	ROUND HEAD BOLT	4.6	M16x27	122160270
8	FLANGE NUT	-	M16	120160003

Designed by	Checked by	Approved by	Date	Scale	Size
FS		FS	2023-01-05	1 : 50	A1
			Nordic W N2+		
			300000060 NO	Edition	Sheet
			0	1 / 1	

12 11 10 9 8 7 6 5 4 3 2 1

A B C D E F G H