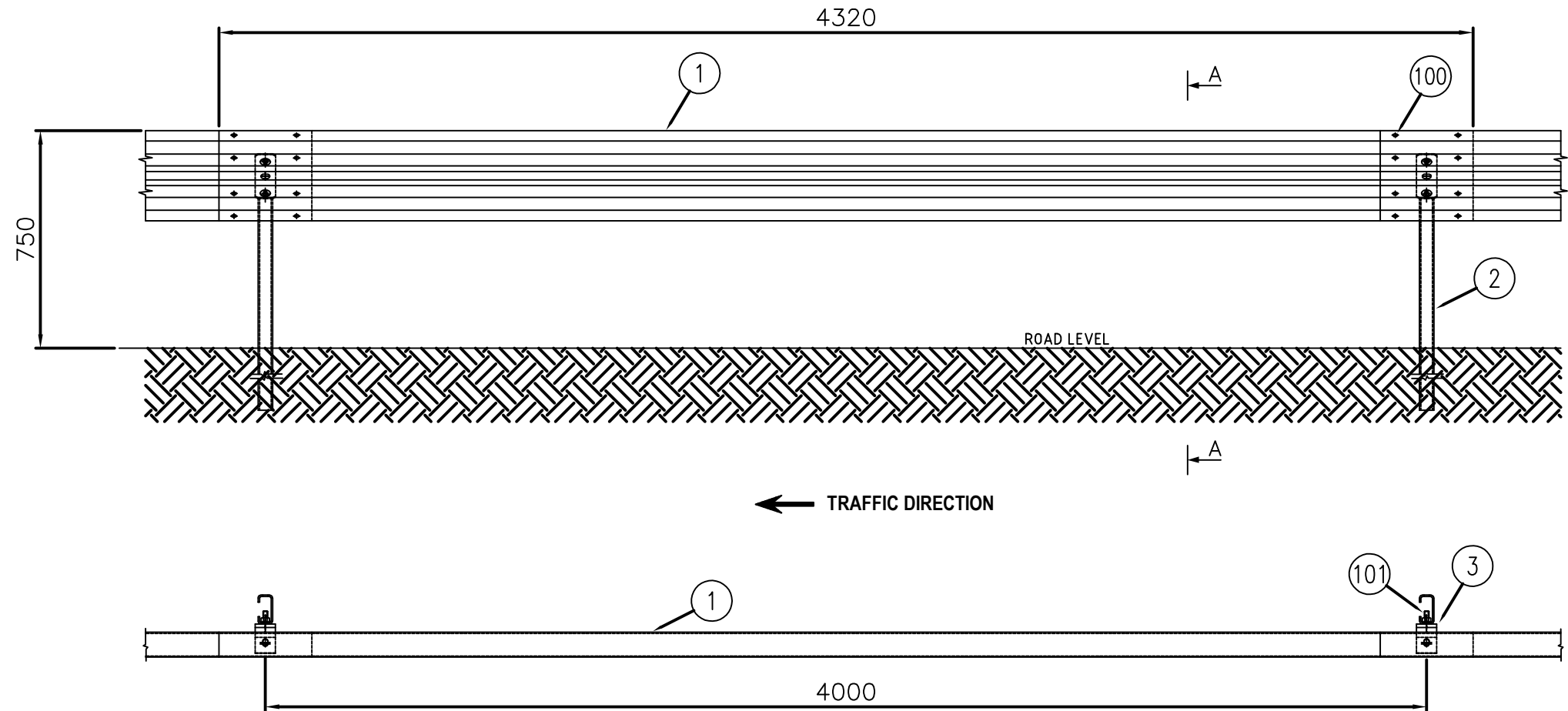
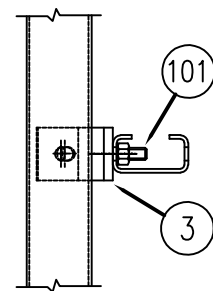


SECTION A-A
SCALA 1:10



| TIGHTENING TORQUE | | |
|-------------------|------------------------|-------|
| BOLTS | POSITION | Nm |
| M16x40 | POST/SPACER CONNECTION | 50÷60 |
| M16x35 | ALL OTHER JUNCTIONS | 225 |



B VIEW

SAP CODE : PABMARN2_T4

| POS. | PIECE/m | DESCRIPTION | MATERIAL | CODE | DRAWING |
|------|---------|------------------------------------|-------------|----------|----------|
| 101 | 0.25 | BOLT M16x40 HEXAGONAL HEAD | 8.8 HDG | 63800231 | 0988 |
| 100 | 2.50 | BOLT M16x35 ROUND HEAD SOCKET HEX | 8.8 zincato | 63800059 | 1114/284 |
| 3 | 0.25 | SPACER 279x70x5 | S355MC+ZNC | 59607061 | B378 |
| 2 | 0.25 | "C" POST 100x50x25 Th. 5 H=1870 mm | S355MC+ZNC | 59401510 | B379 |
| 1 | 0.25 | TWO WAVVSBEAM.486x4320x3 mm | S420MC+ZNC | 59300417 | B344 |

| | | | | | |
|-----------------|----------------|-------------------------------------|--|-----------|--|
| CONTRACT | | PAB (PROVINCIA AUTONOMA DI BOLZANO) | | NR. | |
| TITLE | | | DO NOT INTERPRET THE DRAWING IF YOU HAVE DOUBTS, ASK. | | |
| SIDE BARRIER | | | N2 T4 - (ASSEMBLY) | | |
| REVISION | DESCRIPTION | SIGNATURE | DATE | | |
| A | SAP CODE ADDED | MAGAGNINI | 30/01/19 | | |
| | | SIGNATURE | | DATE | |
| | | DRAWN | | MAGAGNINI | |
| | | CHECKED | | | |
| | | APPROVED | | 30/01/19 | |
| DRAWING NR. | | | | B384 | |
| SCALE 1:20-1:10 | | SIZE | | A3 | |
| | | | | REV. A | |



POZZOLO FORMIGARO PLANT
Strada Roveri, 4
15068 POZZOLO F.RO (AL)
Telef. 0143/7761 - Fax 0143/776353