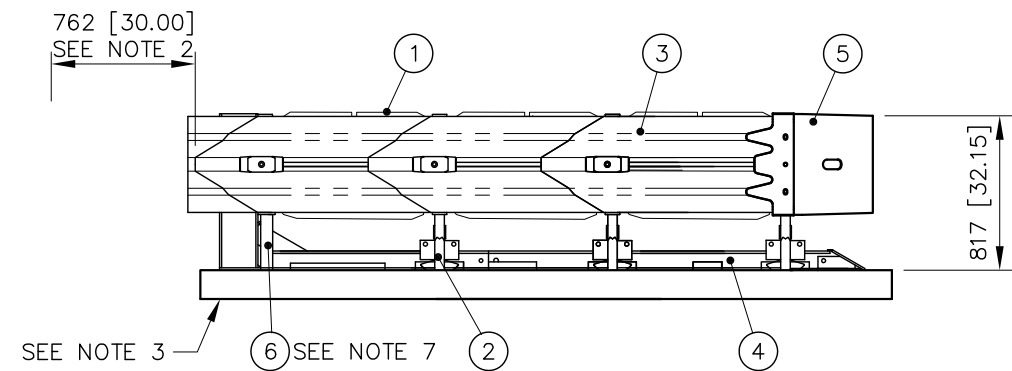


PLAN



ELEVATION  
LEFT SIDE

NOTES:

1. IN COMPLIANCE WITH THE AASHTO 2011 ROADSIDE DESIGN GUIDE, MANUFACTURER RECOMMENDS REMOVAL OF ALL CURBS AND ISLANDS TO ENSURE PROPER IMPACT PERFORMANCE.
2. PROVISION SHALL BE MADE FOR REAR FENDER PANELS TO SLIDE REARWARD UPON IMPACT 762 [30.00] MIN.
3. FOR FURTHER ASSISTANCE RELATING TO ANCHORAGE OF THE QUADGUARD CEN, PLEASE CONTACT CUSTOMER SERVICE AT (312) 467-6750.
4. SEE THE "QUADGUARD CEN SYSTEM PRODUCT MANUAL", FOR A DESCRIPTION OF ITS IMPACT PERFORMANCE CHARACTERISTICS AND DESIGN LIMITATIONS BEFORE PLACING A SYSTEM AT A GIVEN SITE. INFORMATION AND COPIES OF CURRENT MANUAL ARE AVAILABLE BY CALLING CUSTOMER SERVICE DEPARTMENT AT (312) 467-6750.
5. WHERE NECESSARY, THE CUSTOMER SHALL SUPPLY AN ADEQUATE TRANSITION FROM THE QUADGUARD SYSTEM TO THE OBJECT BEING SHIELDED.
6. UNITS OF MEASUREMENT ARE MILLIMETERS [INCHES], UNLESS OTHERWISE NOTED.
7. BACKUP AND NOSE ASSEMBLIES NOT INCLUDED IN MODEL NUMBER, ORDER SEPARATELY.


\* Y = YELLOW NOSE,  
G = GRAY OR GALVANIZED NOSE,  
B = BLACK NOSE

UNIDIRECTIONAL  
MODEL NO. QI9003\*

<b>KEY</b>	① QUADGUARD CARTRIDGE	④ MONORAIL	⑦ BUMPER
	② DIAPHRAGM	⑤ NOSE ASSEMBLY	
	③ FENDER PANEL	⑥ BACKUP	

REFERENCES			
SERIAL#	_____	DIAPHRAGM ASSY.	3540503-OCEN
SALES ORDER#	_____	FENDER PANEL ASSY.	608240
EH PROJECT#	_____	BUMPER ASSY.	3540584-0000
DESIGN SPEED	50 km/h [31 mph]	BACKUP ASSY.	3540565-0000
NOSE COLOR	_____	MONORAIL ASSY.	3540060-OCEN
NUMBER OF UNITS	_____	BELT NOSE ASSY.	3540553-OCEN
		STEEL NOSE ASSY.	617394

DRAWN:	R. CUMMINS	DATE:	10/10/05
DESIGNED:		DATE:	
CHECKED:	K. LOONEY	DATE:	10/10/05
APPROVED:	R. BROUGHER	DATE:	10/10/05
CAD FILE:	QCTSCVR3-U90.dwg		

 <b>ENERGY ABSORPTION SYSTEMS</b> ENGINEERING AND RESEARCH DEPARTMENT	<b>QUADGUARD® CEN SYSTEM</b> 3 BAY 90" SYSTEM W/TENSION STRUT BACKUP		
	SCALE	DWG.	SHEET
1:40	QCTSCVR3-U90	1 OF 1	E

Revisions	Date	Rev.	By	Ckd.	App.
REVISED ANCHORING NOTES AND UPDATED DWG AND TABLE, ECO 2528	12/17/08	C	RJV	STT	PLK
ADD STEEL NOSE TO REF, ADD NOSE TO NOTE 7, ADD GALV NOSE, ECO 2869	3/5/10	D	DPH	JME	FJP
REMOVED SPRING DEPICTION FROM NOSE	6/22/12	E	STT	PLK	KWL