

REBLOC RB100SF_8

standard element

Area of application
Permanent system

Construction
**Free standing
with position securing**



Containment level **H4b** (covers H3, H2, H1, N1, T3, T2 and T1)
Working width **W4** (covers W5, W6, W7 and W8)
Impact severity level **ASI B**

Product features & Advantages

- High containment level (H4b) thanks to shear force beam between the concrete elements
- Usage on bridge constructions
- Reduced collision design forces imparted on the bridge deck due to free standing construction



The special REBLOC[®] RB100SF_8 system with low working width is ideal for the application on new bridge structures as well as for the refurbishment of existing bridges. The highest containment level H4b offers best possible protection and even restrains the impact of a 38 t lorry driving at 65 kph (TB81 according to EN1317-2).

Car passengers are also well protected (ASI B). The position securing guarantees the alignment of the elements on the bridge structure. The position securing is installed every 8 m and prevents damages to the bridge structure due to the flexibility of the system.

Special dilatation elements for bridge expansion joints were part of the test according to European Standard EN1317-1/2. These elements take up movements caused by temperature fluctuations.

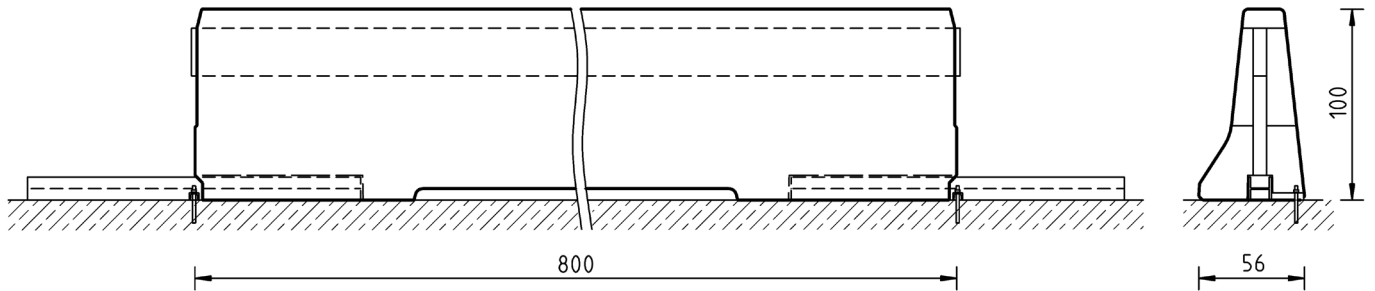
REBLOC RB100SF_8

standard element



tested according to EN1317-1/2

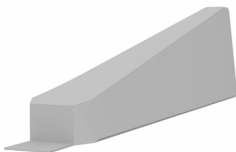
Technical data



all dimensions in cm

Containment level	H4b
Working width	W4
Impact severity level	ASI B
Construction	free standing with position securing (1 x M16 adhesive anchor in concrete per element)
Terminal elements	RB100SF_4TR, RB100SF_4TL (4 x M24 adhesive anchor)
Dimensions L x W x H in cm	800 x 56 x 100 cm
Weight/element	6.000 kg
Pcs./truck (24 t)	4 pieces
Minimum installation length	96 m (without terminal elements)
Curve radius	$r \geq 350$ m, smaller radii on request
Concrete quality	C30/37, exposure class according to national requirements
Coupling/exposed steel parts	fully integrated, exposed parts hot-dip galvanized
CE-certification	✓

System element - combinable



Terminal element
RB100SF_4T



Dilatation element
RB100SF_2.35EXM

REBLOC RB100SF_EXM

Dilatation element

Area of application
Permanent system

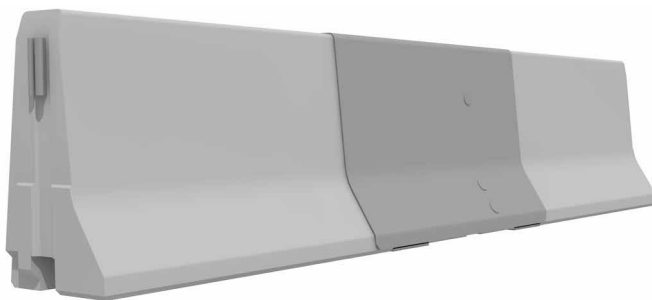
Construction
Anchored

tested according to EN1317-1/2
not tested according to ENV1317-4



Product features & Advantages

- Expansion joint system for RB100SF_8_H4b/W4
- Usage on bridge constructions
- Maintenance free



Special dilatation elements for bridge expansion joints were part of the test according to European Standard EN1317-1/2. These elements take up movements caused by temperature fluctuations.

The expansion joint system consists of

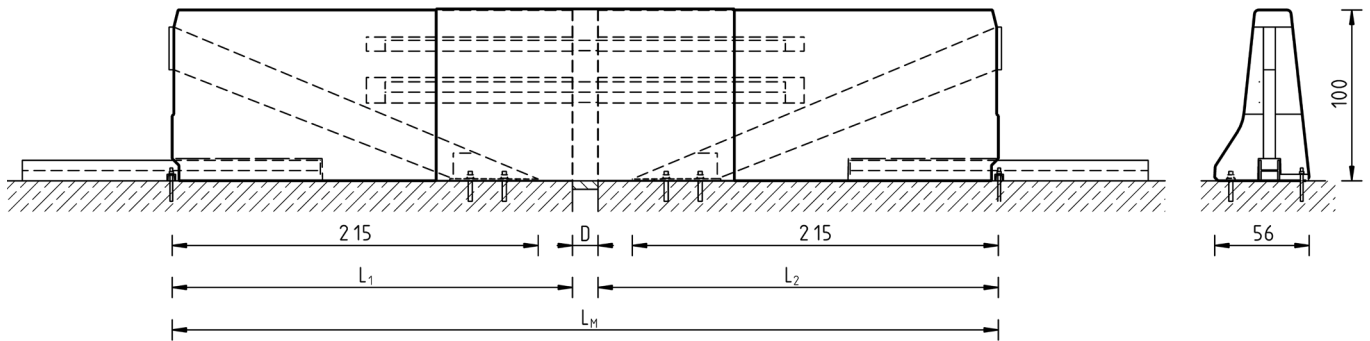
- 2 pcs. precast concrete expansion joint elements
- Expansion joint system for length compensation
- Steel cover plate

REBLOC RB100SF_EXM

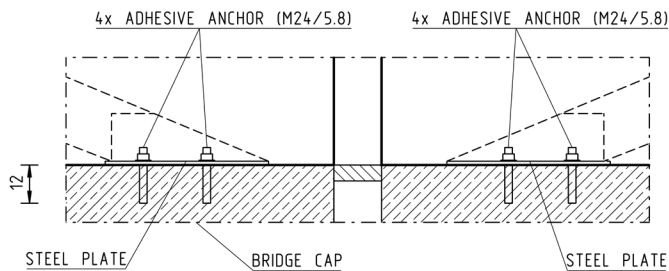
Dilatation element

tested according to EN1317-1/2
not tested according to ENV1317-4

Technical data



Installation, anchorage



Types

Type	D (dilatation)	L ₁	L ₂	L _M *
RB100SF_2.35EXM	+/- 10 cm	235	235	485
RB100SF_2.40EXM	+/- 15 cm	240	240	500
RB100SF_2.50EXM	+/- 25 cm	250	250	530
RB100SF_2.75EXM	+/- 50 cm	275	275	605

* L_M in middle position

all dimensions in cm

Construction	anchored
Dimensions L x W x H in cm	485-605 x 56 x 100 cm
Total weight	4.000-5.000 kg
Elongation	up to +/- 50 cm in longitudinal direction, larger elongation on request
Concrete quality	C30/37, exposure class according to national requirements
Coupling/exposed steel parts	fully integrated, exposed parts hot-dip galvanized

System elements - combinable



Standard element
RB100SF_8_H4b/W4



Terminal element
RB100SF_4T

REBLOC GmbH

Wiener Straße 662 · 3571 Gars/Kamp · Austria
Tel.: +43 (0) 2985 30528 2900
Fax: +43 (0) 2985 30528 2901
office@rebloc.com

www.rebloc.com