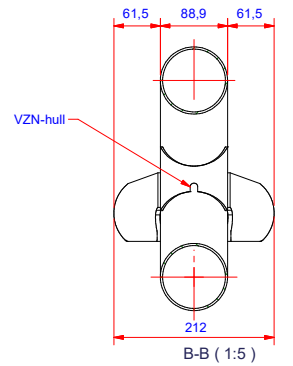
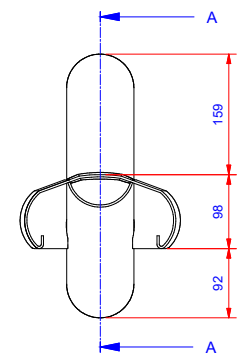
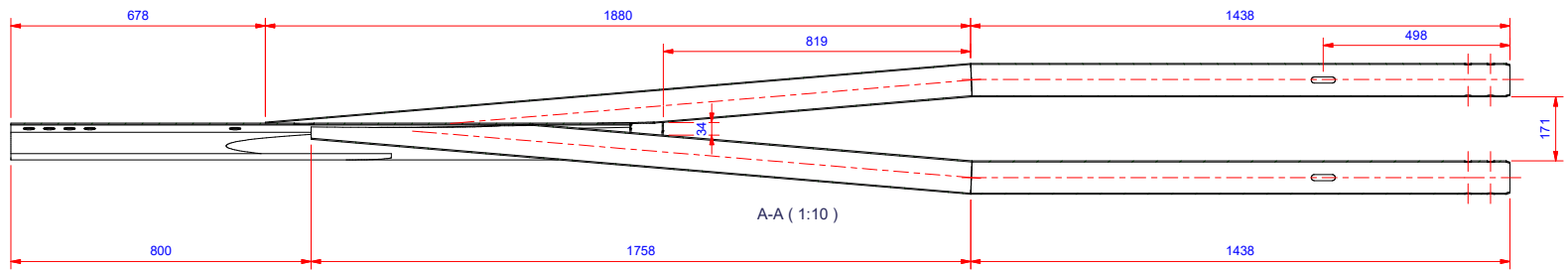
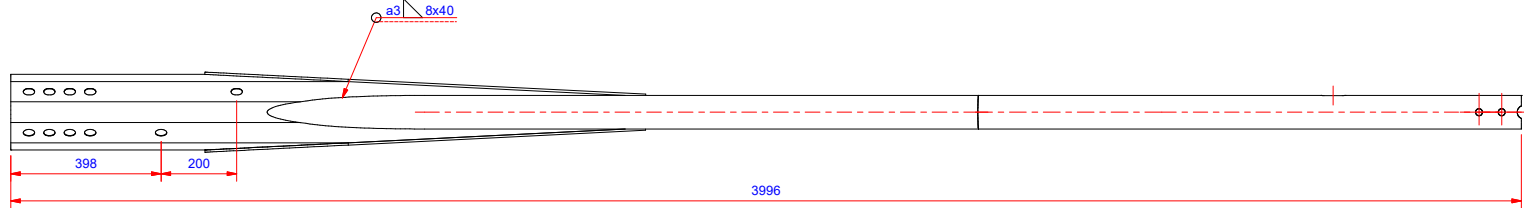
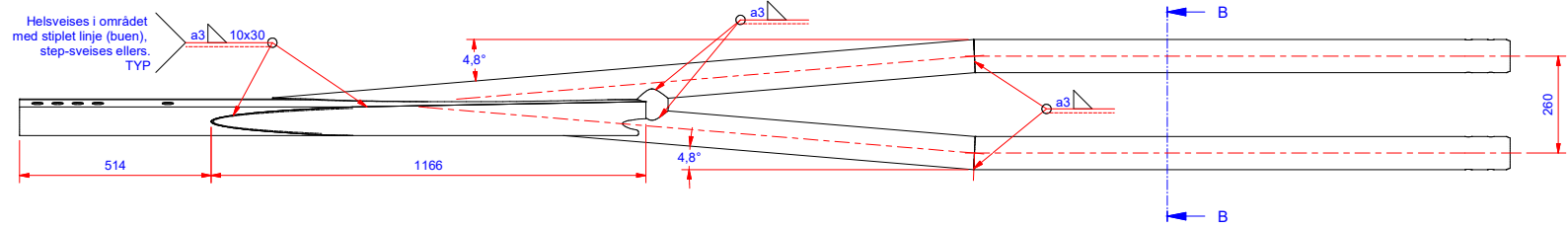
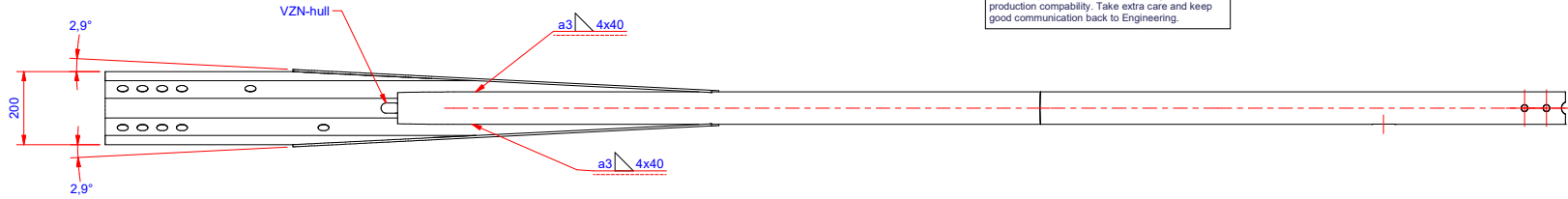


First time product/Development
 To be test-produced in a small quantity to check production compability. Take extra care and keep good communication back to Engineering.

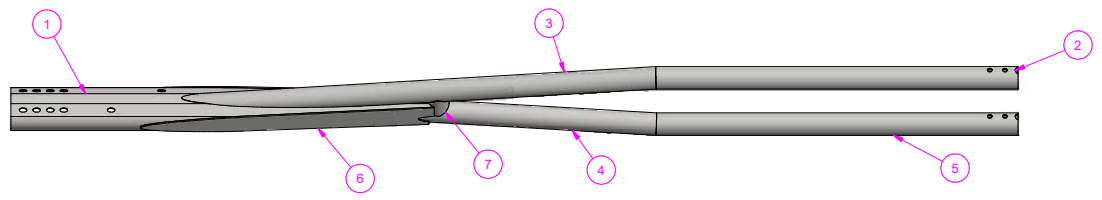


Total vekt: **53,3 kg**

Welded constructions: Tolerances for measurements without tolerances specified to be done in accordance with **EN-ISO-13920, class B**
Welding Production procedures according to **NS-ISO-3834-3**; Class C, Execution class 2
Welding control according to Statens Vegvesen **HB R762E**

Road-side product Surface Treatment
 VZN/HDG Surface treatment of steel according to: Statens Vegvesen **HB N101**; Ch5, table 5.1 and 5.2
 Coating according to: **EN-ISO-1461** and **Sintef tech. approval nr.2303**, appr. by Statens Vegvesen

General mechanical tolerances: Tolerances for measurements without tolerances specified to be done in accordance with **NS-EN-ISO 2768-1**
 Tolerances are "C-Coarse", unless otherwise is specified.
Sharp corners rounded to 2mm, in accordance with Statens Vegvesen **HB R762E**



Pos	Ant.	Råvare nr.	Beskrivelse	Kapl.	Vekt	Laserfil
7	1	253	SV.RØR 88,9/2,9 S355J2H S/A L=6.2M	85	0,3 kg	6174709
6	2	3449	VARMV 1500*3000*6.0 355 MC laser pluss		4 kg	6174706
5	1	253	SV.RØR 88,9/2,9 S355J2H S/A L=6.2M	1438	8,8 kg	6174705
4	1	253	SV.RØR 88,9/2,9 S355J2H S/A L=6.2M	1767	9,5 kg	6174704
3	1	253	SV.RØR 88,9/2,9 S355J2H S/A L=6.2M	1887	8,7 kg	6174703
2	1	253	SV.RØR 88,9/2,9 S355J2H S/A L=6.2M	1438	8,8 kg	6174702
1	1	61751U	SafeLine M: Rørprofil 200x100x3 L=2995 cc3/6	1678	9,2 kg	

Dato	19.05.2021	Konstr./Tegnet		
Beregning		Godkjent	sibj	
			JOH	
61747		Ark nr. 1/2		
Overgang SafeLine-R N2 --> SafeLine-M				
SafeLine-R				Revisjon
Henvising:				Erstattet av
Erstattet for				Denne tegning er vår eiendom og må ikke, uten vårt samtykke, brukes, kopieres eller mot våre interesser gis tilgjengelig for andre.

Rev.	Dato	Godkj.	Utgitt	Beskrivelse
-	25.05.2021	sibj		