

S a f e S t o p

9 0

V. Technical Specifications

1) Weight

Cartridge #1	109 lbs.	49 kg
Cartridge #2	162 lbs	73 kg
Frame Components	1875 lbs	850 kg
Jacks	86 lbs	39 kg
Total	2234 lbs	1 013 kg

2) Dimensions

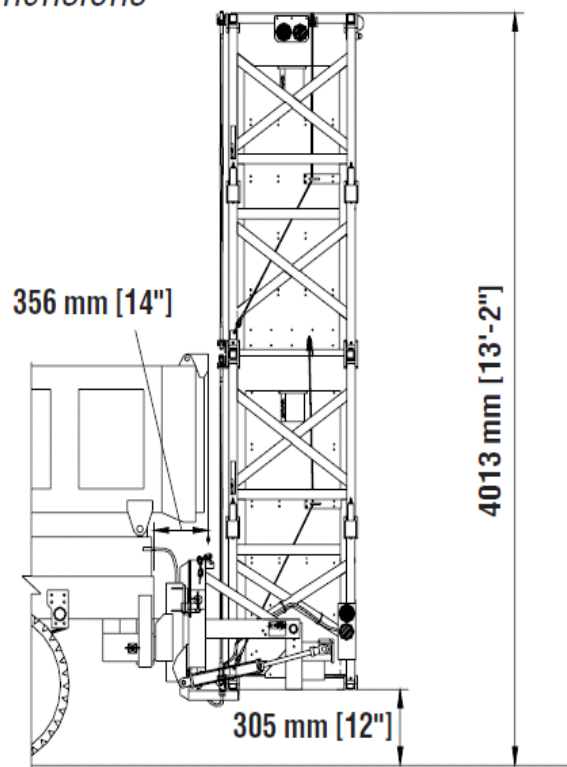


Figure 38

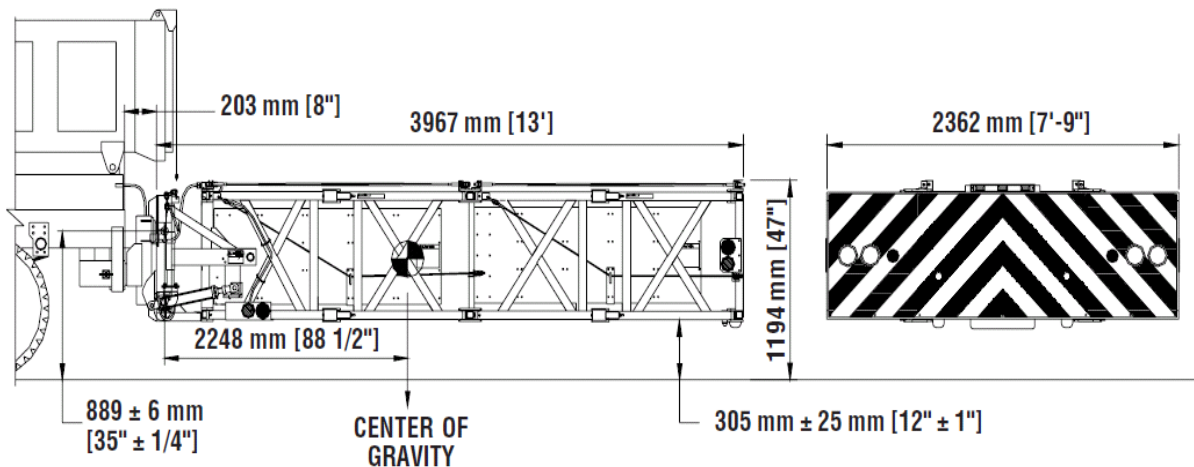
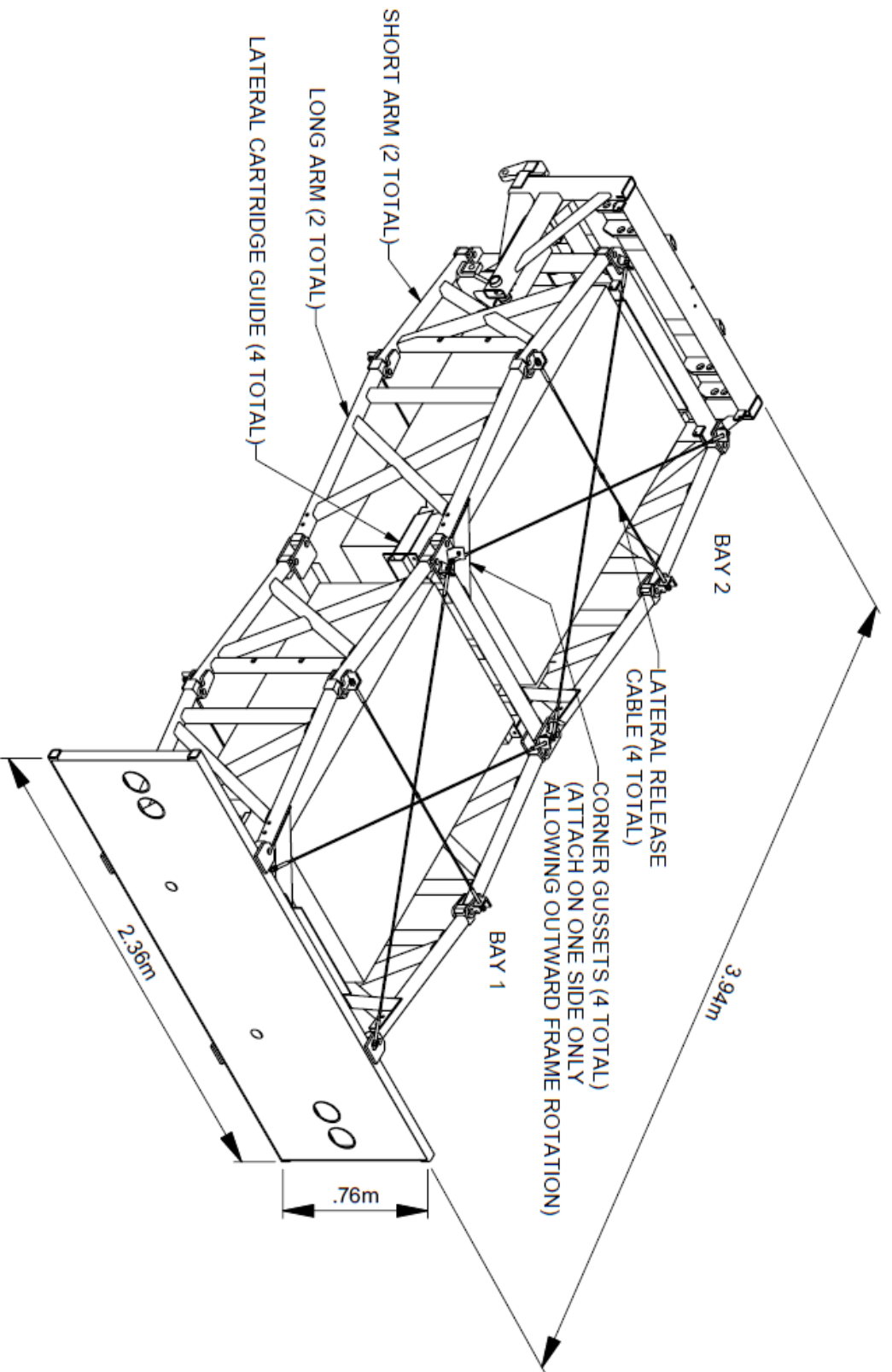


Figure 39



NOTE:
 1. THIS DRAWING DEPICTS THE ENHANCEMENTS MADE TO THE ORIGINAL SAFESTOP TMA TO IMPROVE PERFORMANCE.

DRAWN dcox	DATE 2/17/2005
DESIGNED dcox	DATE
CHECKED	DATE
APPROVED	DATE
D.C.	DATE



Safe-Stop TMA (ENHANCEMENTS)

FILE Safe-Stop TMA	SCALE	DRAWING Safe-Stop TMA	SHEET 1 of 1	REV
-----------------------	-------	--------------------------	-----------------	-----