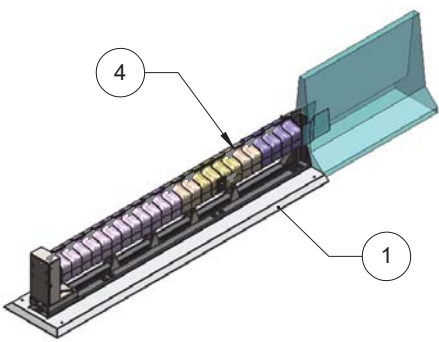
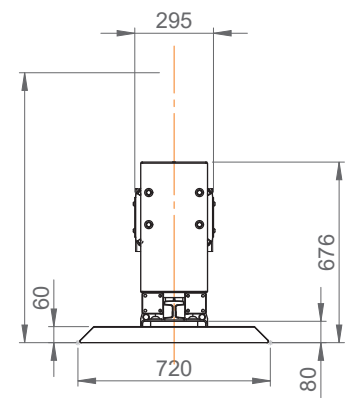
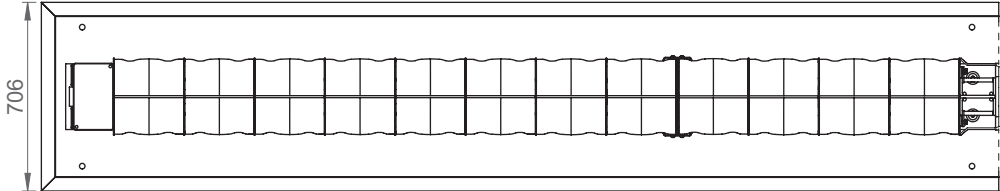
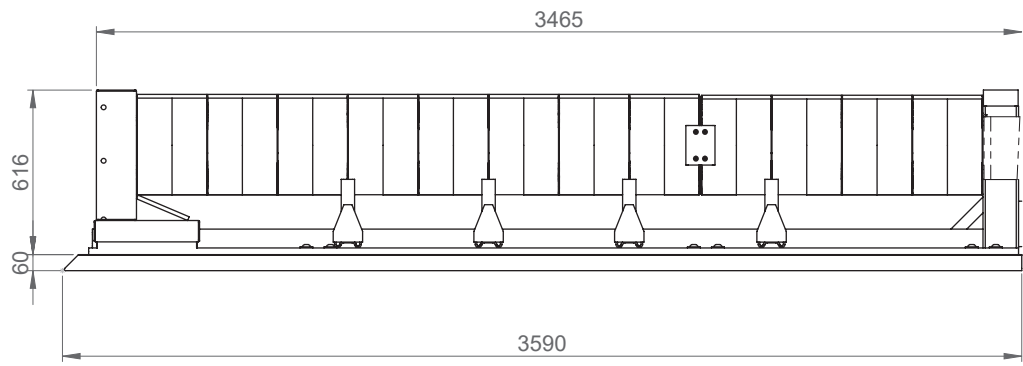



BURNISHING	ELECTROLYTIC GALV.	HOT DIP GALVANISING	NICKEL PLATING COATING	CHEMICAL NICKEL PLATING
TEMPERING	INDUCTION QUENCHING	OIL QUENCHING	CEMENTATION	
TRATTAMENTI SUPERFICIALI O TERMICI				
RAL 9010 - WHITE	RAL 2004 - ORANGE	RAL 9006 - ALLUMINIUM	RAL 6017 - GREEN	RAL 8011 - BROWN
RAL 1021 - YELLOW	RAL 5007 - BLUE	RAL 9011 - BLACK	RAL1021-YELLOW/RAL9011-BLACK	
VERNICIATURA				



4	1	Terminale di barriera SMA T2 senza palafitte		D52220500	A
3	16	VITI GUARD RAIL TTCE Norm.: UNI EN ISO 7380 Mat.: 10.9 Fin.: ZC	M16x50	3000014990	
2	16	ROSETTA PIANA LARGA UNI 6593 100HV ZC	M16	3000019183	
1	1	Piastra per T2		D41923802	K
Pos.	Default /Q.ta	Descrizione	Dimensione	N. disegno	Esp.



**INDUSTRY AUTOMATION
MANUFACTURING & SERVICE s.r.l.**

CONSTRUCTION STANDARDS
SURFACES CONDITION ACCORDING TO UNI ISO 302:2004, EXCEPT FOR PARTICULAR INDICATIONS

NOT QUOTED CHAMFER: **1 x 45°**
NOT QUOTED FILLET: **R 1**

TOLLERANCES ISO 8015 / UNI ISO 2768-m-K

DRAWING BY CAD 3D

B	Antimo Buccino	10/01/2017	Antimo Buccino	Aggiornamento
A	Antimo Buccino	16/11/2016	Antimo Buccino	
AUTHOR		DATE	APPROVAL	DESCRIPTION

DESCRIPTION

WEIGHT
KG 1252.30

SCALE
1:20

SHEET / NUMBER
A3 / 1/2

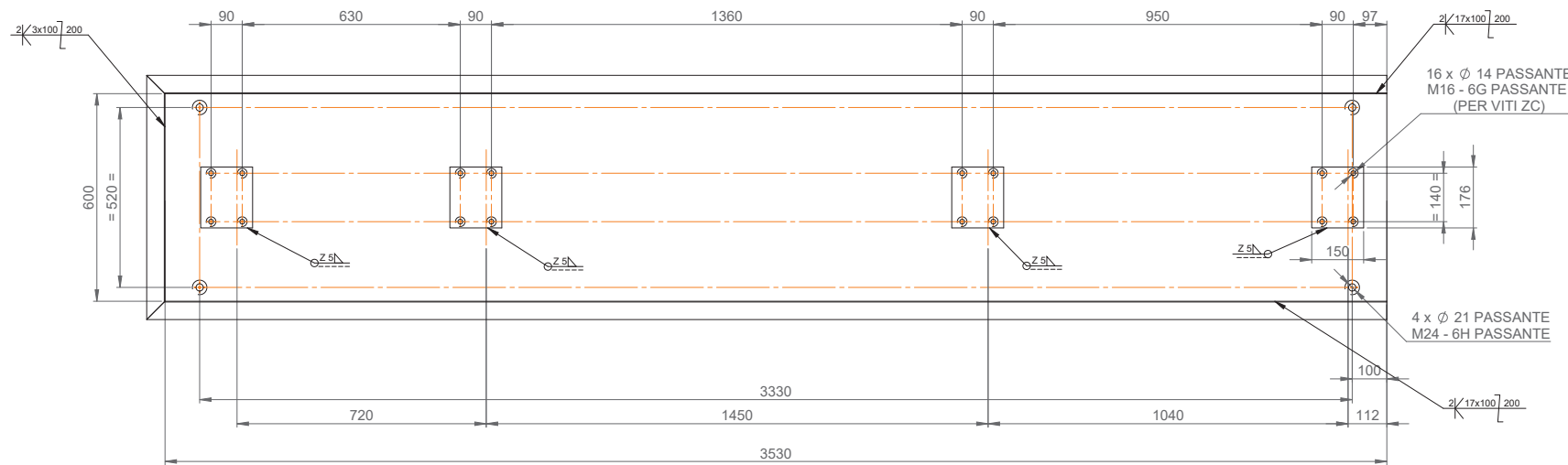
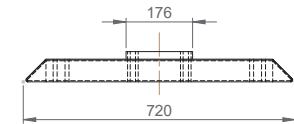
- Terminali con piastra per cantieri
End terminal T2 with plate for working zone

THIS DRAWING IS INDUSTRY AMS S.R.L. CONFIDENTIAL PROPERTY (ARTICLE CP 821). IT IS FORBIDDEN TO REPRODUCE OR COMMUNICATE THE DRAWING TO THIRD PARTS WITHOUT WRITTEN CONSENT OF THE COMPANY.

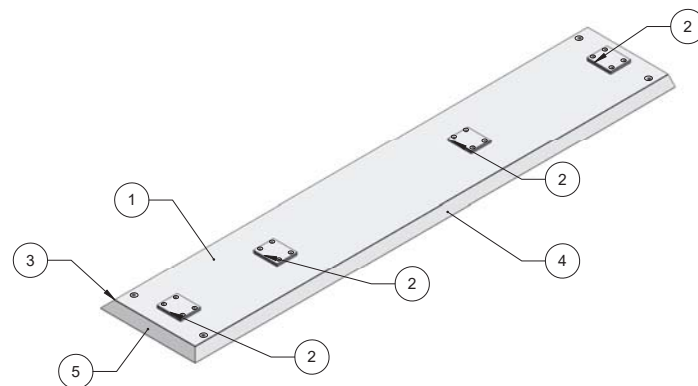
INDUSTRY AMS S.R.L. PROTECT ITS OWN RIGHTS ACCORDING TO LAW

DRAWING N. **D41923819** ESP. **B**

BURNISHING	ELECTROLYTIC GALV.	X	HOT DIP GALVANISING	NICKEL PLATING COATING	CHEMICAL NICKEL PLATING
TEMPERING	INDUCTION QUENCHING		OIL QUENCHING	CEMENTATION	
TRATTAMENTI SUPERFICIALI O TERMICI					
RAL 9010 - WHITE	RAL 2004 - ORANGE		RAL 9006 - ALUMINIUM	RAL 6017 - GREEN	RAL 8011 - BROWN
RAL 1021 - YELLOW	RAL 5007 - BLUE		RAL 9011 - BLACK	RAL1021-YELLOW/RAL9011-BLACK	
VERNICIATURA					



N.B.: FILETTARE I FORI SOLO DOPO LA ZINCATURA A CALDO



5	1	Front plate				D41923822
4	1	Lamiera laterale 1				D41923821
3	1	Lamiera laterale 1				D41923820
2	4	Smooth plate				D41923818
1	1	Piastra per Terminale T2				D41923806

Pos.	Q.ty	Description	Dimension	Length	ID
J		Antimo Buccino	12/11/2016	Antimo Buccino	Aggiornati particolari e ridisegnato come assieme
K		Antimo Buccino	28/11/2016	Antimo Buccino	Aggimate dimensioni
A		Antimo Buccino	09/01/2017	Antimo Buccino	Smussi realizzati con lamiere piegate
		Antimo Buccino	12/11/2016	Antimo Buccino	
		AUTHOR	DATE	APPROVAL	DESCRIPTION

CONSTRUCTION STANDARDS SURFACE CONDITION ACCORDING TO UNI ISO 30220:04 EXCEPT FOR PARTICULAR INDICATIONS		DESCRIPTION SMA - Safety Modular Absorber	WEIGHT KG 1028.40
NOT QUOTED CHAMFER: 1 x 45° NOT QUOTED FILLET: R 1	End Terminal	SCALE 1:10	SHEET / NUMBER A2 / 1/1
TOLLERANCES ISO 8015 / UNI ISO 2768-m-K DRAWING BY CAD 3D	Smooth plate for end terminal T2	DRAWING N. D41923802	ESP. K