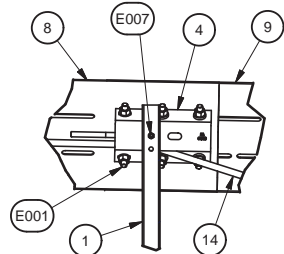
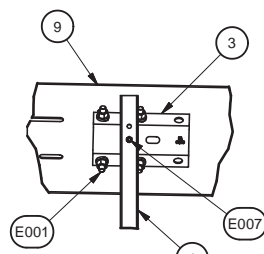


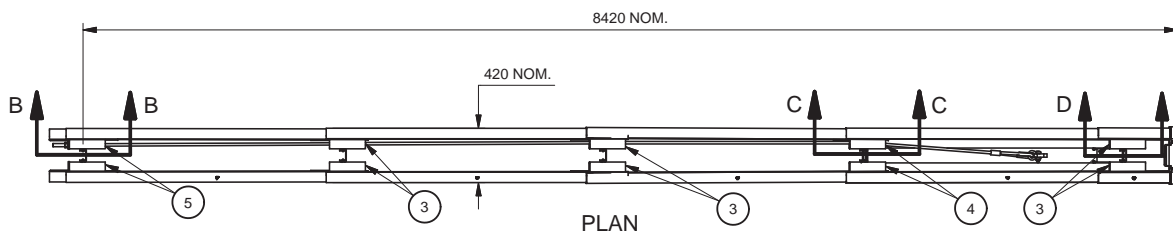
SECTION B-B



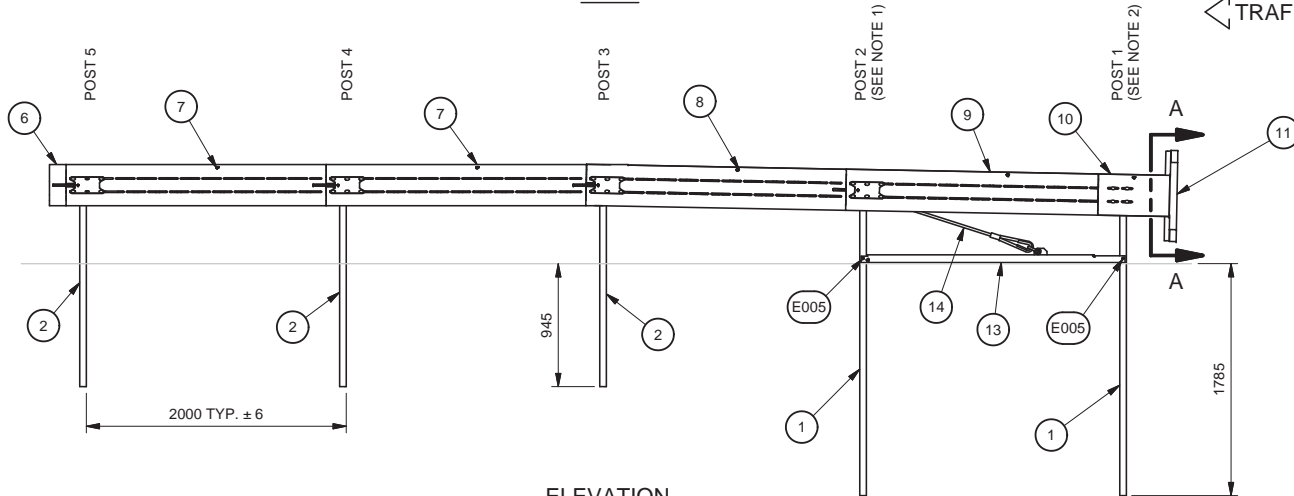
SECTION C-C



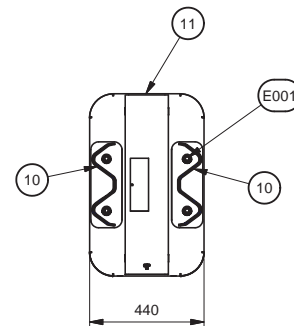
SECTION D-D



PLAN



ELEVATION



SECTION A-A


PARTS LIST			
ITEM	STOCK NO.	DESCRIPTION	QTY.
1	034076G	8'0 PST/TRN CN MD SYS	2
2	034075G	5'3 PST/TRN CN MD SYS	3
3	618426G	SPACER,POST/RAIL,TEM,G	6
4	618427G	SPACER,POST/RAIL/CABLE,TEM,G	2
5	618428G	SPACER,CABLE ANCHOR,TEM,G	2
6	613554G	RAIL,W/FIN,W-SHAPE,525,G	2
7	613552G	RAIL,W-SHAPE,2323,W/FIN,G	4
8	613550G	RAIL,W-SHAPE,2323,G	2
9	618212G	RAIL,W-SHAPE,2484,350TEM,G	2
10	618444G	RAIL,HEAD,TEM,G	2
11	618436B	HEAD,TEM,G,W/DECALS	1
12	604465G	BACKING PLATE,POST,TE,G	8
13	614927G	STRUT,TE,G	1
14	618437B	CABLE ASSY,W/SHACKLE,7570,TEM	1
15	618429G	WASHER,BAR,1/4X2 1/2X64M,W/HOLE,G	10
16	118469B	INSTALL INST,TREND CEN DS	1
E001	116594B	RAIL BOLT ASSY,THK WASHER,E001	56
E005	115214G	HX BOLT ASSY,M10X130,E005	2
E007	118466G	HX BOLT ASSY,M10X30,E007	10

- NOTES:
- ATTACH ITEM 4 IN UPPER HOLE OF ITEM 1 (POST 2). ITEM 14 (CABLE) PASSES THROUGH HOLE IN ITEM 4.
 - ATTACH ITEM 3 IN LOWER HOLE OF ITEM 1 (POST 1). SEE SHEET 2 FOR DETAILS OF GUARDRAIL AND HEAD HEIGHT.

Revision	ECO	Date	Rev	By	Chk.	App.

DRAWN: B. Sindorf	DATE: 5/18/2011
DESIGNED: B. Sindorf	DATE: 5/17/2011
CHECKED: K. Mortensen	DATE: 10/26/2011
APPROVED: P. Kruse	DATE: 10/21/2011

MODEL NO. 618440B 815.92 lbmass

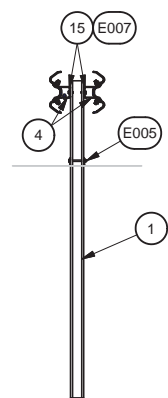


ENERGY ABSORPTION SYSTEMS, INC.
ENGINEERING AND RESEARCH DEPARTMENT

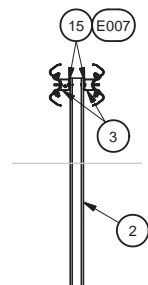
**TREND CEN DOUBLE-SIDED
P4,DRIVEN POSTS**

UNLESS OTHERWISE NOTED, ALL DIMENSIONS ARE IN MILLIMETERS.
DIMENSIONS ACCORDING TO ASME Y14.5M-1994 UNLESS OTHERWISE SPECIFIED.

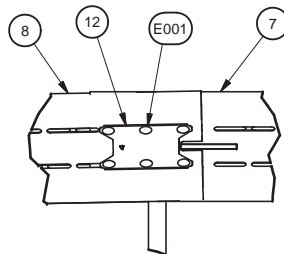
DRAWING: 618440	SHEET: 1 of 2	REV: -
--------------------	------------------	-----------



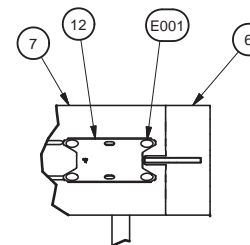
SECTION E-E



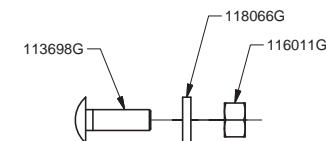
SECTION F-F



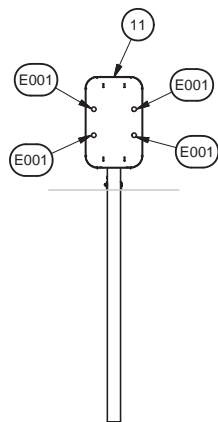
DETAIL G



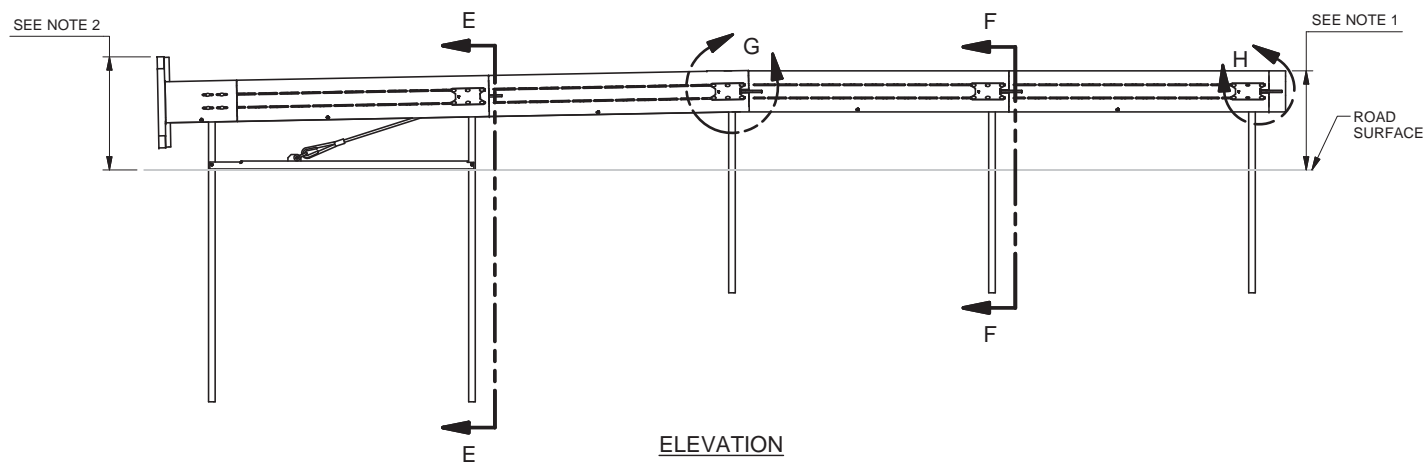
DETAIL H



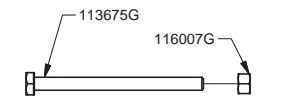
PART NO. E001



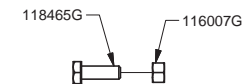
FRONT



ELEVATION



PART NO. E005



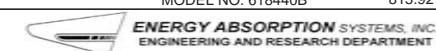
PART NO. E007

- NOTES:
 1. NOMINAL SYSTEM GUARDRAIL HEIGHT TO BE 760 +/- 30mm.
 2. NOMINAL HEIGHT OF TOP OF SYSTEM HEAD IS 870 +/- 30mm.

Revision	ECO	Date	Rev	By	Chk.	App.

DRAWN: B. Sindorf	DATE: 5/18/2011
DESIGNED: B. Sindorf	DATE: 5/17/2011
CHECKED: K. Mortensen	DATE: 10/26/2011
APPROVED: P. Kruse	DATE: 10/21/2011

UNLESS OTHERWISE NOTED, ALL DIMENSIONS ARE IN MILLIMETERS.
 DIMENSIONS ACCORDING TO ASME Y14.5M-1994 UNLESS OTHERWISE SPECIFIED.



TREND CEN DOUBLE-SIDED
 P4, DRIVEN POSTS



DRAWING: 618440	SHEET: 2 of 2	REV: -
--------------------	------------------	-----------

MODEL NO. 618440B 815.92 lbmass