



Statens vegvesen
Norwegian Public Roads
Administration

Benefits of research



Kjersti Kvalheim Dunham

Programme manager Coastal Highway Route E39

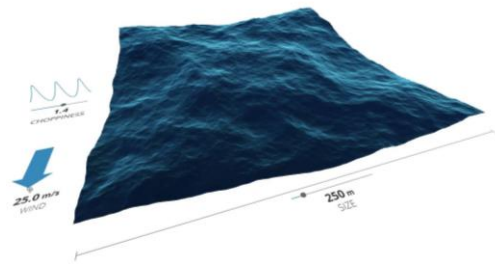
November 1st 2018



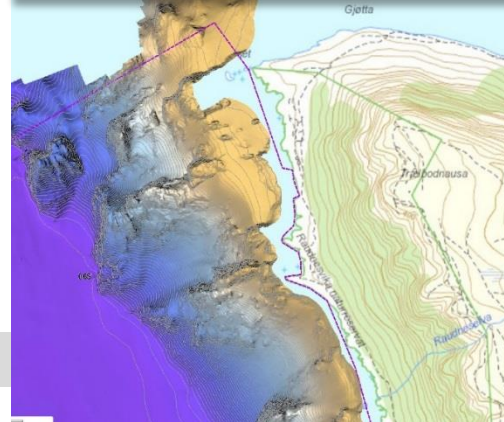
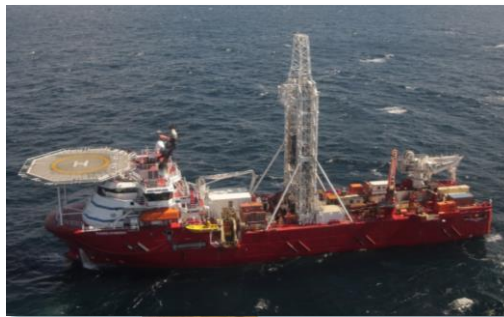
Statens vegvesen
Norwegian Public Roads
Administration

Ongoing investigations

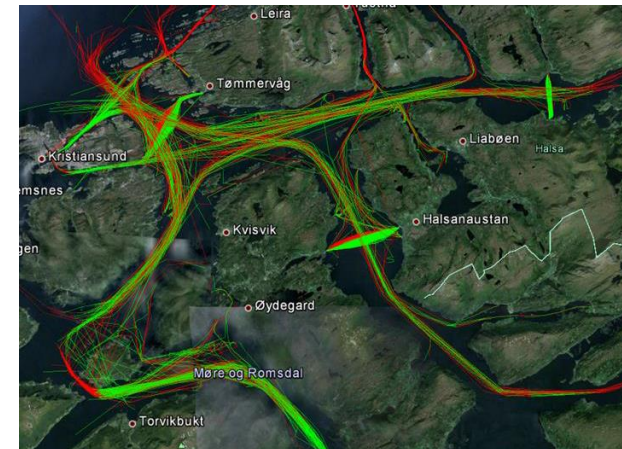
Environmental data



Ground assesment



Risk of ship collision



CELEBRITY ECLIPSE
Valerenga Ship

MMSI: 9682154	IMO: 9248888
Call Sign: WMECH	SWT (Grossweight): 9500 t
Flag: Malta	Length: 170m x 30m
All Type: Passenger	Builder: 2010
	Status: Active

Side mottatte posisjoner: 0 Ferge

Informasjon mottatt: 21.10.2014 14:30:00
Område: Caribbean Sea
Størrelse og lengde: 143x27 / 40x12
Ship Name: St Lucia
Ship Type: Cruise Ship
Status: Active
IMO: 9248888 (EU Code)

Relevante posisjoner

21.10.2014 14:30:00



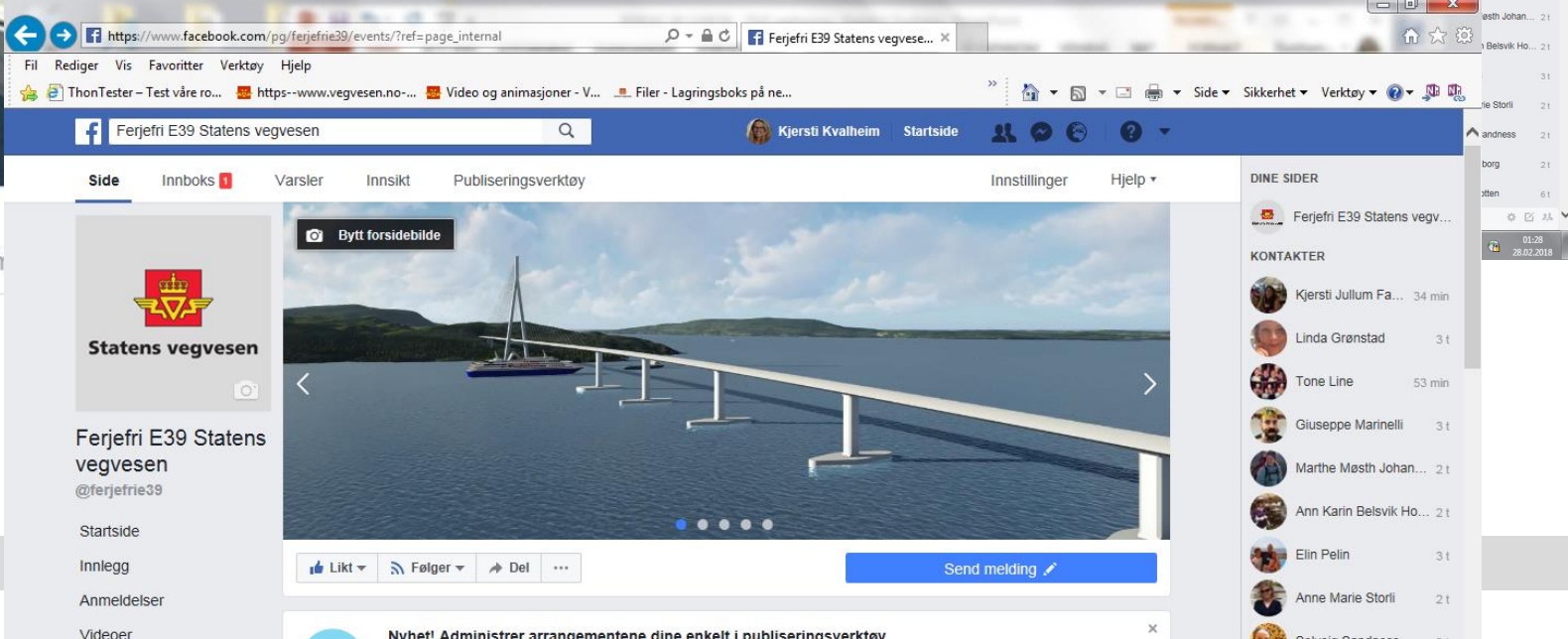
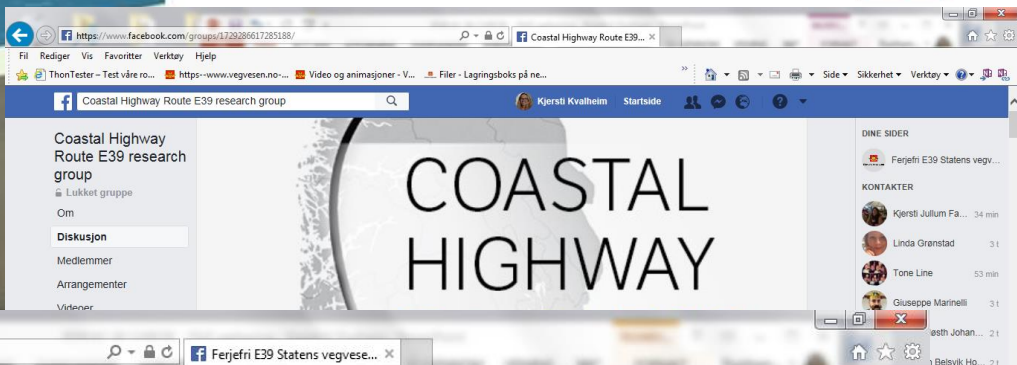
Open source data can be shared

More companies can benefit from our efforts

- Møre Ocean Lab
- Rolls Royce
- Avinor
- Marin and maritime industry
 - Local fish industry
 - Ship industry
- «Det digitale Havrom»



The world's first underwater suspended tunnel is planned in Norway.



12 mill. visninger
90 k likerklakk 3,5 k kom

05.11.2018

Research saves money!



05/11/2018

Join in on <https://www.vegvesen.no/ferryfree39>



Statens vegvesen
Norwegian Public Roads
Administration

Free webinars August 2018–

31.aug	kl 10-11	Arianna Minoretti	Submerged Floating Tube Bridge – The invisible bridge (Tunnel)
14.sep	kl 10-11	Øyvind Wiig Petersen	Force identification on long-span bridges using measured dynamic response
21.sep	kl 10-11	Joar Tistel	Bridge foundations on large water depths
28.sep	kl 10-11	Henrik Skyvulstad	Wind-tunnel testing, combined with wave loads for extreme bridges
05.okt	kl 10-11	Michael Styrk Andersen	Bridge Aeroelasticity and the Non-Flutter Design Principle for Long Span Bridges
12.okt	kl 10-11	Finn Idar Giske	Floating Bridges: Long-Term Extreme Response Analysis of Marine Structures Using Inverse Reliability Methods
19.okt	kl 10-11	Renny Arismendi	Risk based maintenance optimisation and structural reliability
26.okt	kl 10-11	Tor Martin Lystad	The Hardanger Bridge – full scale measurements and experiences so far
09.nov	kl 10-11	Jiangpeng Shu	Submerged floating tube bridge(tunnel) subjected to internal blast and temperature loading
16.nov	kl 10-11	Tale Egeberg Aasland	Current and wave induced flow around a submerged floating tube bridge (tunnel)
30.nov	kl 10-11	Jungao Wang	The aerodynamics of a novel stay cable cross-sectional shape
07.des	kl 10-11	Etienne Cheynet	Wind-induced response of cable-supported bridges
14.des	kl 10-11	Tore Helgedagsrud	Wind loads on bridge decks using CFD (Computational Fluid Dynamics)

2019

04.jan	kl 10-11	Thomas Viuff	Modelling and analysis of damping in extreme bridges
11.jan	kl 10-11	Randi Nøhr Møller	Aerodynamic Stability of Long Span Bridges
25.jan	kl 10-11	Leonard Nilsson	Induced spatial development



Statens vegvesen
Norwegian Public Roads
Administration



Thank you!

www.vegvesen.no/ferjefrie39

ferjefrie39@vegvesen.no

www.facebook.com/ferjefrie39

www.youtube.com/vegvesenet

