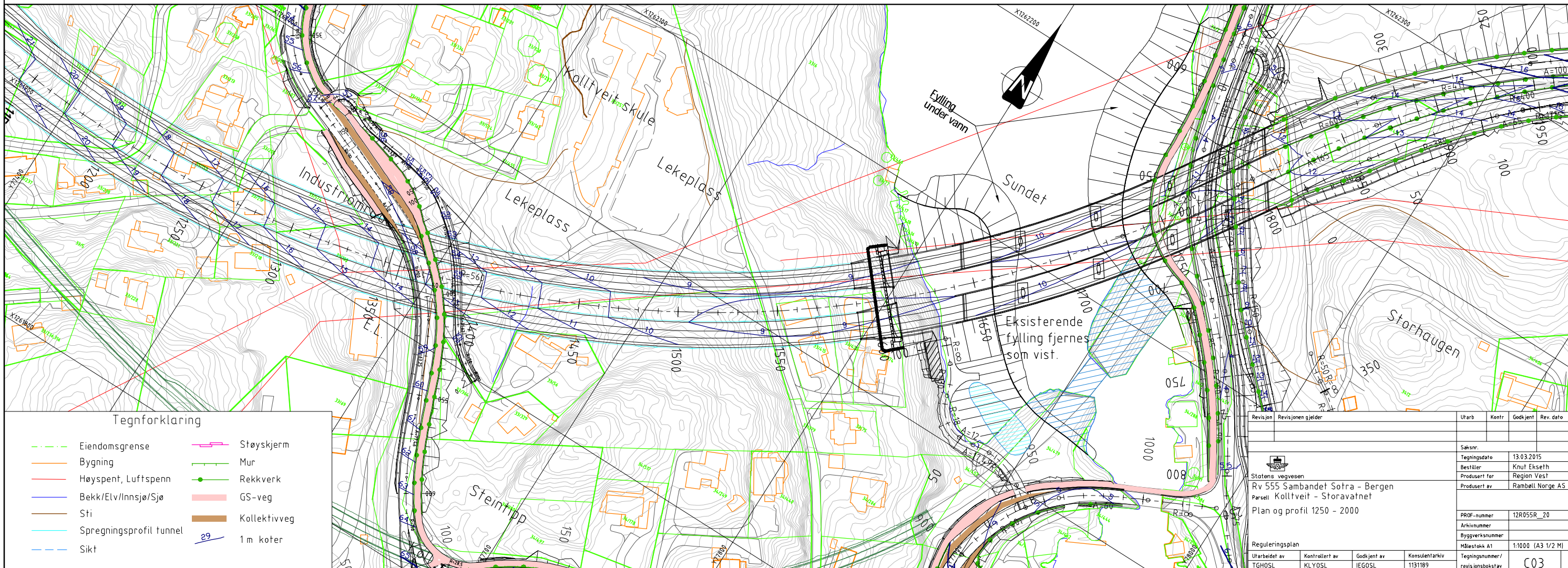


PROFIL NR.1250	1300	1350	1400	1450	1500	1550	1600	1650	1700	1750	1800	1850	1900	1950	2000																																																																																																																																																																																																																																																																												
HOR.KURV.	R=-560																																																																																																																																																																																																																																																																																										
BREDEDEUTV.	A=200, A=165, R=400																																																																																																																																																																																																																																																																																										
TVERRFALL	H.kj.b.k. 0%, V.kj.b.k. 8.0%, 0.0%, 8.0%, 8.0%																																																																																																																																																																																																																																																																																										
PROFIL H.	66.53	66.27	66.84	66.49	66.91	66.14	65.36	65.78	64.72	65.44	65.28	65.89	66.23	66.74	68.06	66.39	67.52	66.04	62.72	63.69	62.46	63.34	58.72	62.99	57.71	62.64	52.06	62.29	51.17	61.94	54.14	61.59	47.76	61.24	47.72	60.98	51.08	60.58	53.18	60.29	52.08	60.02	49.66	59.78	46.55	59.58	44.43	59.4	41.53	59.26	41.17	59.14	41.92	59.05	40.42	58.99	36.49	58.94	32.52	58.95	30.51	58.98	25.79	59.1	23.75	59.21	21.79	59.3	17.18	59.41	9.62	59.5	0.0	59.6	0.0	59.7	0.0	59.8	0.0	59.9	0.0	60.0	0.0	10.1	0.0	10.2	0.0	10.3	0.0	10.4	0.0	10.5	0.0	10.6	0.0	10.7	0.0	10.8	0.0	10.9	0.0	11.0	0.0	11.1	0.0	11.2	0.0	11.3	0.0	11.4	0.0	11.5	0.0	11.6	0.0	11.7	0.0	11.8	0.0	11.9	0.0	12.0	0.0	12.1	0.0	12.2	0.0	12.3	0.0	12.4	0.0	12.5	0.0	12.6	0.0	12.7	0.0	12.8	0.0	12.9	0.0	13.0	0.0	13.1	0.0	13.2	0.0	13.3	0.0	13.4	0.0	13.5	0.0	13.6	0.0	13.7	0.0	13.8	0.0	13.9	0.0	14.0	0.0	14.1	0.0	14.2	0.0	14.3	0.0	14.4	0.0	14.5	0.0	14.6	0.0	14.7	0.0	14.8	0.0	14.9	0.0	15.0	0.0	15.1	0.0	15.2	0.0	15.3	0.0	15.4	0.0	15.5	0.0	15.6	0.0	15.7	0.0	15.8	0.0	15.9	0.0	16.0	0.0	16.1	0.0	16.2	0.0	16.3	0.0	16.4	0.0	16.5	0.0	16.6	0.0	16.7	0.0	16.8	0.0	16.9	0.0	17.0	0.0	17.1	0.0	17.2	0.0	17.3	0.0	17.4	0.0	17.5	0.0	17.6	0.0	17.7	0.0	17.8	0.0	17.9	0.0	18.0	0.0	18.1	0.0	18.2	0.0	18.3	0.0	18.4	0.0	18.5	0.0	18.6	0.0	18.7	0.0	18.8	0.0	18.9	0.0	19.0	0.0	19.1	0.0	19.2	0.0	19.3	0.0	19.4	0.0	19.5	0.0	19.6	0.0	19.7	0.0	19.8	0.0	19.9	0.0	20.0	0.0
TERRENG H.	66.53	66.27	66.84	66.49	66.91	66.14	65.36	65.78	64.72	65.44	65.28	65.89	66.23	66.74	68.06	66.39	67.52	66.04	62.72	63.69	62.46	63.34	58.72	62.99	57.71	62.64	52.06	62.29	51.17	61.94	54.14	61.59	47.76	61.24	47.72	60.98	51.08	60.58	53.18	60.29	52.08	60.02	49.66	59.78	46.55	59.58	44.43	59.4	41.53	59.26	41.17	59.14	41.92	59.05	40.42	58.99	36.49	58.94	32.52	58.95	30.51	58.98	25.79	59.1	23.75	59.21	21.79	59.3	17.18	59.41	9.62	59.5	0.0	59.6	0.0	59.7	0.0	59.8	0.0	59.9	0.0	60.0	0.0	10.1	0.0	10.2	0.0	10.3	0.0	10.4	0.0	10.5	0.0	10.6	0.0	10.7	0.0	10.8	0.0	10.9	0.0	11.0	0.0	11.1	0.0	11.2	0.0	11.3	0.0	11.4	0.0	11.5	0.0	11.6	0.0	11.7	0.0	11.8	0.0	11.9	0.0	12.0	0.0	12.1	0.0	12.2	0.0	12.3	0.0	12.4	0.0	12.5	0.0	12.6	0.0	12.7	0.0	12.8	0.0	12.9	0.0	13.0	0.0	13.1	0.0	13.2	0.0	13.3	0.0	13.4	0.0	13.5	0.0	13.6	0.0	13.7	0.0	13.8	0.0	13.9	0.0	14.0	0.0	14.1	0.0	14.2	0.0	14.3	0.0	14.4	0.0	14.5	0.0	14.6	0.0	14.7	0.0	14.8	0.0	14.9	0.0	15.0	0.0	15.1	0.0	15.2	0.0	15.3	0.0	15.4	0.0	15.5	0.0	15.6	0.0	15.7	0.0	15.8	0.0	15.9	0.0	16.0	0.0	16.1	0.0	16.2	0.0	16.3	0.0	16.4	0.0	16.5	0.0	16.6	0.0	16.7	0.0	16.8	0.0	16.9	0.0	17.0	0.0	17.1	0.0	17.2	0.0	17.3	0.0	17.4	0.0	17.5	0.0	17.6	0.0	17.7	0.0	17.8	0.0	17.9	0.0	18.0	0.0	18.1	0.0	18.2	0.0	18.3	0.0	18.4	0.0	18.5	0.0	18.6	0.0	18.7	0.0	18.8	0.0	18.9	0.0	19.0	0.0	19.1	0.0	19.2	0.0	19.3	0.0	19.4	0.0	19.5	0.0	19.6	0.0	19.7	0.0	19.8	0.0	19.9	0.0	20.0	0.0
OVERBYGN.T.	75CM																																																																																																																																																																																																																																																																																										



Tegnforklaring

	Eiendomsgrense		Støyskjerm
	Bygning		Mur
	Høyspent, Luftspenn		Rekkverk
	Bekk/Elv/Innsjø/Sjø		GS-veg
	Sti		Kollektivveg
	Spregningsprofil tunnel		1m koter
	Sikt		

Revisjon	Revisjonen gjelder	Utarb.	Kontr.	Godkjent	Rev. dato
Saksnr:					
Tegningsdato: 13.03.2015					
Bestiller: Knut Ekseth					
Produsert for: Region Vest					
Produsert av: Rambøll Norge AS					
Stasjons vegvesen					
Rv 555 Sambandet Sotra - Bergen					
Parsell Kollveit - Storavatnet					
Plan og profil 1250 - 2000					
Reguleringsplan					
Utarbeidet av	Kontrollert av	Godkjent av	Konsulentarkiv	Tegningsnummer / revisjonsbokstav	
TGHOSL	KL YOSL	IEGOSL	1131189	C03	